

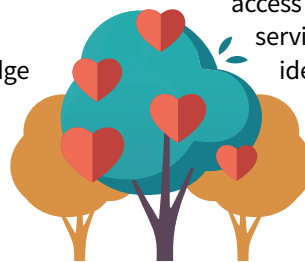
Here's How to Make a Difference

Whether you have lived on the island for generations or moved here more recently for the quality of life, it's clear that Bainbridge Island has a strong and unique sense of community. Island residents are able to maintain a high quality of life primarily because of its vibrant nonprofit sector.

We respond to the changes in our community as it grows, and remain flexible in times of need. Through the support of donors at all levels—from \$10 to \$10,000 or more—BCF has been able to award a total of over \$17.5 million since inception. The impact of the work of our grantees is truly inspiring—and the need for support is only increasing each year. It is never too late to get involved.

When you give through BCF, you become our partner in funding critical efforts to create and maintain a healthy future for the people we love and for the island we call home. Through direct contributions to our work, by opening a Donor Advised Fund, by participating in campaign drives, or by leaving Bainbridge Community Foundation in your will or estate plan, you help maintain Bainbridge Island as a place our children and grandchildren will be proud to call home. Here are some of the specific initiatives you could support.

- **Bainbridge Community Fund:** Gifts to the Bainbridge Community Fund support BCF's programs and activities, and are allocated at the discretion of the Board of Trustees to the area of greatest need. Gifts of \$1,000 or more to this fund are recognized in the Leadership Circle.
- **Capacity Building Grants Partners:** This special grant program helps nonprofits become more effective by building their capacity to function as stronger, more efficient organizations.
- **Housing Action Fund:** This fund addresses the critical need for affordable housing on Bainbridge Island by supporting both acquisition and bricks-and-mortar housing programs.
- **Community Response Fund:** This fund provides financial resources to nonprofit organizations for urgent health and human service needs in our community, especially during times of economic hardship or human or natural disaster. This fund has and will continue to award grants to local nonprofits that have been affected by COVID-19.
- **Scholarship Funds:** Annual scholarships awarded to graduating Bainbridge seniors pursuing higher education.
- **BCF Endowment Fund:** Gifts to permanent endowed funds ensure there will be ongoing support for our community for generations to come.
- **The Inclusion, Diversity, Equity, Accessibility, and Social Justice (IDEAS) Fund:** The IDEAS Fund is based on the principle that everyone should have equitable access to opportunities, programs, resources, and services—regardless of a person's race, age, gender identity, socioeconomic background, (dis)ability, or country of origin. The IDEAS Fund will help support these requests to BCF Grants Cycles as well as specific initiatives and partnerships that promote the IDEAS principles.
- **Community Grantmaking Partner Fund:** Donations support the Foundation's annual grantmaking program for nonprofit organizations serving the Bainbridge community. Grants are awarded to 501(c)(3) nonprofits doing work in all sectors of the community.



Our work is only made possible through the generous support of donors. We know that the COVID-19 pandemic is far from over, but with your continued support we will rise to the challenges ahead. **Please feel free to learn more or donate at www.BainbridgeCF.org.**



Address:
299 Madison Ave. N, Suite B
Bainbridge Island, WA 98110
206.842.0433
www.BainbridgeCF.org



Excellence. Accountability. Impact.™

Staff

Jim Hopper
Executive Director
Debbie Kuffel
Program & Finance Officer
Brigette Yates
Development Officer
Dana Binnendijk
Community Impact Officer
Jessica Henshaw
Office Administrator

Board Members

David Harrison
President
Brooke Rufo-Hill
Vice President
Jason Taylor
Treasurer
Barbara Swartling
Secretary
Cris Beattie
Jackie Chang
Peter Drury
Marcia Hastings
Theona Jundanian
Judy Karr
Mary Kerr
Omie Kerr
Barbara Magusin
Vicky Marsing
Paul Merriman
Proctor Schenk
Hart Williams
Trese Williamson

COMMUNITY UPDATE



WINTER 2021



Local COVID-19 Vaccination Effort Receives BCF's Humanitarian Award

“I never want anyone to forget how lucky we are to be in this community with partnerships like this. We would not have vaccinated to this degree without all of these key players,” remarked Anne LeSage, Emergency Management Coordinator at the City of Bainbridge Island (COBI), during a meeting with BCF.

From December 23rd, 2020 to June 5th, 2021, over 25,000 doses of the COVID-19 vaccine were administered due to the coordinated Bainbridge Island effort. Over 600 volunteers dedicated more than 25,000 hours, including home visits and a mobile clinic that provided vaccinations to more vulnerable populations in Kitsap and Jefferson counties. As a result, more than 82% of Bainbridge Island residents ages 12 and up have initiated their COVID-19 vaccine, which is the highest rate in all of Kitsap County.

This immense effort didn't happen overnight. When Mark Tan, owner of Bainbridge Island Community Pharmacy, received an email that he would be sent 300 doses of the COVID-19 vaccine just days before Christmas, he knew the pharmacy wasn't big enough to be a stand-alone clinic. Mark and Loren Bast, Executive Director of Bainbridge Prepares, quickly teamed up to find a venue for the clinic along with trained volunteers who could administer the shots—and the vaccination clinics grew from there. Over the course of days, weeks, and months, a network of local nonprofits, agencies, and companies united forces to create one of the most efficient and impactful volunteer vaccination efforts in the region.

Bainbridge Community Foundation wanted to recognize the incredible work it took to make this happen, and honored the partners listed above with BCF's Humanitarian Award at its Philanthropy Celebration on November 4th. BCF also created a short film about this incredible effort, which is now available to watch on our website at www.BainbridgeCF.org.

As Anne described, “My entire career has been focused on collaboration, and this was by far the best example of collaboration and coalition-building I have ever seen. I have never seen the depth and breadth of what we have here in our community.” BCF is grateful to these leaders and hundreds of volunteers for their incredible efforts to keep our community safe.



BCF produced a short film on the Bainbridge Island vaccination effort, available at www.BainbridgeCF.org

- City of Bainbridge Island
- Bainbridge Island Fire Department
- Bainbridge Island Community Pharmacy
- Rotary Club of Bainbridge Island
- Bainbridge Prepares
- Bainbridge Island Senior/Community Center
- Island Volunteer Caregivers

IN THIS ISSUE

A Letter of Thanks • How To Support Our Work • Incentives For Charitable Giving • Needs of the Community

A Letter of Thanks

To the Bainbridge Community,

Your compassion and generosity have carried our community through a challenging 20 months. Bainbridge Community Foundation is eternally grateful for your role in ensuring our nonprofits stay afloat, and in some cases thrive, despite the challenges they have faced due to the COVID-19 pandemic. Through the hard work and innovation of nonprofit professionals along with financial support from our community, our local organizations will continue to serve us in 2022. We are immensely proud of how our community has come together during this prolonged crisis.



Nonetheless, you may still be noticing neighbors in need and wondering if we will ever return to life as we knew it before COVID-19. While life might look different, coming together continues to be our strength—virtually, outside, distanced, or otherwise. BCF is thankful to play a role in facilitating that collaboration, as well as helping analyze community needs, awarding grants to meet those needs, and educating donors and nonprofit leaders. We know that local organizations play a critical role in ensuring programs and services are accessible to everyone, and we are proud to be a part of that effort. Your generous contributions have allowed us to award more than \$17.5 million in grants to date for programs that benefit people who live, work, or visit Bainbridge Island.

We will continue to build this community as we did before. We will get through this together.

Jim Hopper
Executive Director

BCF Analyzes Needs of the Community

Bainbridge Community Foundation launched its inaugural State of the Sector this fall! In this report, you'll find:

- ✓ **An analysis of our community using socioeconomic data** from outside sources
- ✓ **Results from BCF's Annual Nonprofit Survey**, and how nonprofits help meet the needs of the community
- ✓ **The role of BCF in supporting local nonprofits** and the broader public

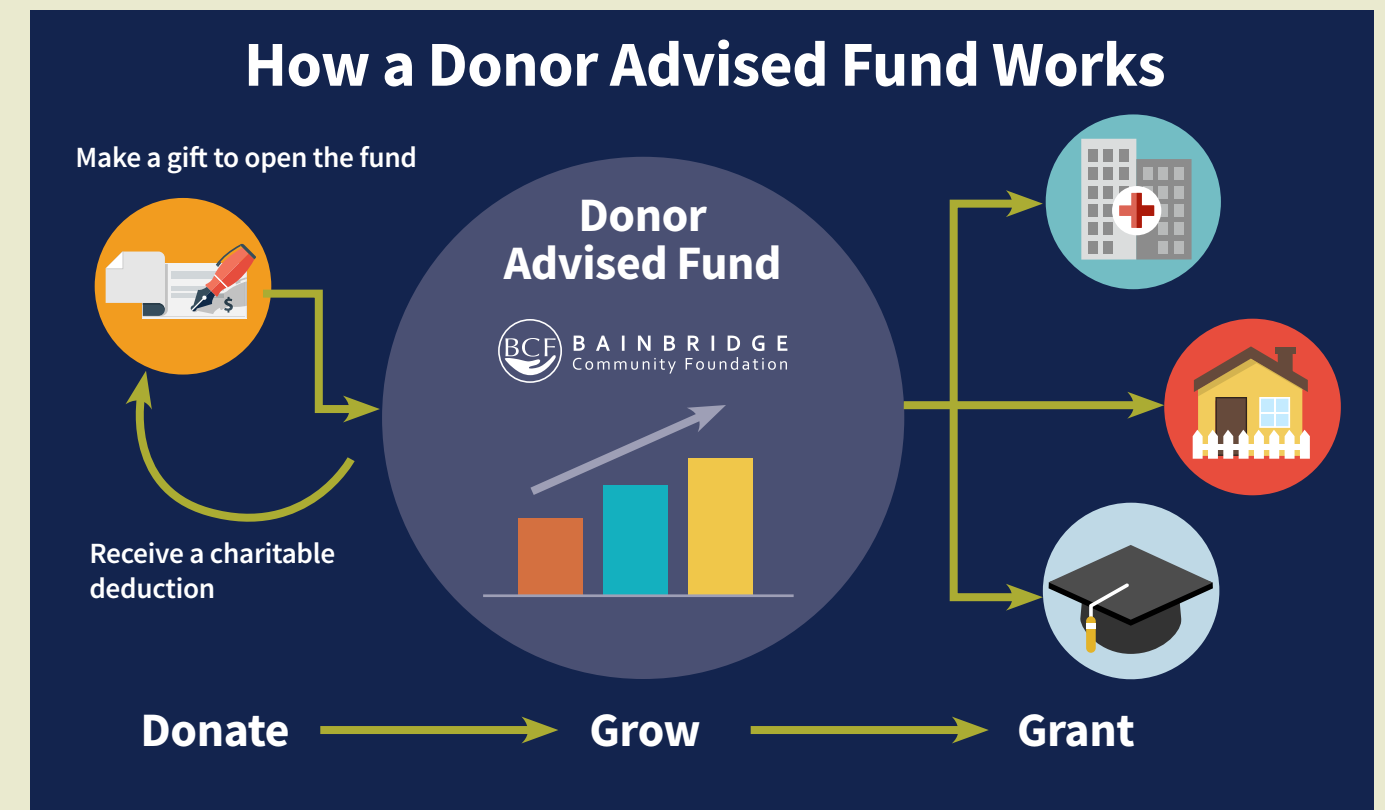
To read more about the report visit our website at www.BainbridgeCF.org and click on "Reports," or contact us at media@bainbridgecf.org if you want a printed version sent to your home. We welcome feedback from the community!



Is a Donor Advised Fund Right for You?

By now you may have heard of Donor Advised Funds, which is one of the most popular tools for charitable giving on the market today. Here's how they work! A donor opens the fund at BCF with a contribution, which is eligible for an immediate tax deduction. BCF invests the contribution in our low-fee socially-responsible investment pool where the fund grows. Whenever the donor is ready, he or she can recommend grants from the Donor Advised Fund to the charities they prioritize the most. Using a Donor Advised Fund makes tax planning and charitable giving easy. BCF's staff has cumulatively over 82 years of experience to help you get the most out of your investments in the community.

Now is a great time to set up a Donor Advised Fund, especially when using appreciated stock. You get to deduct the full fair market value (up to 30% AGI) of the security, and you don't have to pay income tax on the built-in appreciation. Starting a fund takes a matter of minutes – give BCF a call today!



Don't Miss Out on Tax Incentives for Giving in 2021

The extension of the CARES Act has created a number of programs that make charitable giving in 2021 particularly advantageous. For example, as a result of the increase in the standard deduction in 2018, fewer people are eligible to itemize charitable deductions. But the CARES Act allows any individual to itemize charitable deductions of up to \$300 (married couples up to \$600) while still claiming the standard deduction. And for those who do itemize, the benefits of charitable giving are even better. Under the CARES Act, you can deduct up to 100% of your adjusted gross income (AGI), for all of your 2021 cash donations.

Normally, this limit is 60% of AGI. If a donor gives more than 100% of their adjusted gross income, the donor may carry forward excess donations for up to 5 tax years (this enhanced deductibility is set to expire after 2021).

It's a great year to make charitable gifts and also a great year to open a Donor Advised Fund at BCF. Donor Advised Funds can help you get an immediate tax deduction for your gifts, while taking some time to decide what causes you wish to support. We encourage you to consult with your tax advisor to see how you might benefit from these opportunities.

