

Learn. Serve. Grant. Grow



2016 Grantmaking Report

Bainbridge Community Foundation



To inspire giving and service to enhance and sustain our Bainbridge Island Community.

"Learn. Serve. Grant. Grow."

BOARD OF TRUSTEES

Lynn Agnew
Cris Beattie
Eric Cederwall*
David Harrison*
Marcia Hastings
Theona Jundanian
Judy Karr
Mary Kerr
Omie Kerr
Shel Klasky
Paul Merriman
Carl Middleton*
David Moen*
Wendy O'Connor
Proctor Schenk
Chris Snow
Barbara Swartling
Jason Taylor*
Alex Torres
Drew Wolff*

*retired from the board in 2016

*elected to the board in 2016

BCF STAFF

Jim Hopper, *Executive Director*
Debbie Kuffel, *Program & Finance Officer*
Brigette Yates, *Development Officer*

2016 BCF GRANT RECIPIENTS

A Touch of Love Foundation
American Indian College Fund
American Rivers
Amnesty International
Arts & Humanities Bainbridge
Bainbridge Artisan Resource Network
Bainbridge Arts & Crafts
Bainbridge Chorale
Bainbridge Cooperative Nursery School*
Bainbridge High School
Bainbridge Island Boys & Girls Club
Bainbridge Island Historical Museum
Bainbridge Island Land Trust*
Bainbridge Island Little League
Bainbridge Island Museum of Art *•
Bainbridge Island Parks Foundation
Bainbridge Island Rowing*
Bainbridge Island Senior Community Center
Bainbridge Island Special Needs Foundation*
Bainbridge Performing Arts
Bainbridge Public Library
Bainbridge Schools Foundation*
Bainbridge Youth Services
Battle Point Astronomical Association
Beechwood School California Family Foundation
Belmont University
Bethany Lutheran Church
BI Child Care Centers
Bloedel Reserve
Burlington Rotary Foundation
Chief Seattle Club
Childhaven
Clarke School for the Deaf
Classical King FM 98.1
Conservation NW
Consumer's Union
Doctors Without Borders
Eastside Baby Corner
Emory University
Florida State University
Friends of BI High School Sailing
Friends of Fort Ward
Friends of Seattle Waterfront
Friends of the Farms*•
Gene Juarez Beauty Schools LLC
Green Plate Special
Habitat for Humanity
Harmony Hill Retreat Center
Harrison Medical Center Foundation
Heifer International
Holly Ridge Center
Housing Resource Bainbridge*
Hyla Middle School
Island Neighbors
Island Time Activities
Island Volunteer Caregivers
IslandWood*
KCTS
Kids Discovery Museum

Kids in Concert
Kitsap Adult Center for Education
Kitsap Community Foundation
Kitsap Dispute Resolution
Kitsap Humane Society
Kitsap Immigrant Assistance Center
Kitsap Legal Services
KUOW-Puget Sound Public Radio
Lake Tahoe Fund
Leadership Kitsap Foundation
Marge Williams Center
Martha & Mary*
Mercy Corps
Montessori Country School
National Park Foundation
Nordic Heritage Museum
North Kitsap Fishline
Northwest Children's Fund
Occidental College
Olympic College Foundation*
Olympic Performance Group
One Call for All
Operation Nightwatch
OurGEMS
OUT There Adventures
Parkview Services
PATH
PAWS of Bainbridge Island / North Kitsap
Peacock Family Center*
Planned Parenthood of the Great NW
Poulsbo-NK Rotary Foundation
PTSO Odyssey School
Salish Sea Expeditions
Save the Children
Seattle Aquarium Society
Seattle Repertory Theater
Seattle Shakespeare Company
Smithsonian Institution
South Yuba River Citizens League
Southern Poverty Law
Stanford University School of Law
Tenants Union of Washington State
The Carter Center
The Center for the Art of Translation
The Coffee Oasis
The Mountaineers
The New School: Parsons School of Design
The Stanford Fund
Trust for Public Land (Washington State)
U.S. Fund for UNICEF
University of Utah
Volunteers in Asia
Washington State Smile Partners*
West Sound Treatment Center
West Sound Wildlife Shelter
West Sound YFC
Western Washington University
WSU 4-H Clubs & Affiliated 4-H Organizations
Yes! Magazine
YWCA of Kitsap County*

* For a brief summary of the project and the impact that it has had on the Bainbridge community look on page 5-6.

• For a brief summary of this Capacity Building Grant and the impact that it has had on the Bainbridge community look on page 7-8.

2016 OVERVIEW

It was a fantastic year of assisting our nonprofit community in achieving their mission. BCF reached a record \$2,272,966, and overall we've granted \$8,791,468 since our inception in 2001. The following pages provide a snapshot of grants distributed in 2016 and the impact from the prior year's grantmaking reports.

The **2016 Community Grant Cycle** reached new levels in every measurable way. We had more grant dollars awarded, more donor advisor partners, more new applicants, and more CGC team members than ever before. And, our average CGC grant size increased to an all-time high. We culminated the grant cycle in our annual *Inspiring Work* event in July.

The **2016 Capacity Building Grant Cycle** recipients were announced in late December and will assist five organizations to strengthen their internal capacity. The applications to this grant

At-A-Glance

2016 GRANTMAKING HIGHLIGHTS

COMMUNITY GRANTS CYCLE:	\$243,661
LARGEST GRANT AWARDED:	\$1,500,000
DONOR ADVISED GRANTS:	208
GRANTS AWARDED:	278

TOTAL AWARDED GRANTS IN 2016

\$2,272,966

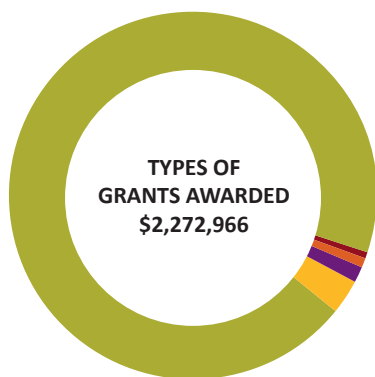
CUMULATIVE GRANTMAKING HIGHLIGHTS

COMMUNITY GRANTS CYCLE:	\$1,572,316
DONOR ADVISED GRANTS:	1,351
GRANT CYCLE GRANTS:	484

TOTAL AWARDED GRANTS SINCE 2001

\$8,791,468

TOTAL DOLLARS GRANTED-2016



- DONOR ADVISED FUND: \$2,134,389
- BCF AREA OF INTEREST FUND: \$7,500
- BCF SCHOLARSHIP FUNDS: \$25,000
- BCF DESIGNATED/AGENCY FUNDS: \$29,282
- OTHER BCF FUNDS: \$76,795

cycle were well-written and focused on board/staff development, leadership, budgeting, fundraising, and strategic planning.

The **2016 Scholarships** set an all-time record in both numbers and dollars. BCF awarded \$25,000 to nine students from Washington State who are attending schools of higher education throughout the United States.

Through **Nonprofit Agency Funds**, BCF supported the annual Island Treasure Award celebration, the Amy Award, and Bainbridge Schools Foundation (Liz Orr Fund). The **Designated Fund, HotDog!** Assisted Bainbridge Performing Arts.

After lack of funding threatened the closure of its B.I. facility, BCF aided the YWCA in 2016 through our **Community Response Fund**, an **Area-of Interest Fund**. The purpose of this fund is to assist local non-profit human service agencies that experience an unexpected temporary funding need which impacts their ability to provide critical community services. A new Area-of-Interest fund, **The Bainbridge Youth Sports Access Fund**, was established to assist in paying sports participation fees for high school student athletes here on Bainbridge Island.



THE COMMUNITY GRANT CYCLE

WHO'S INVOLVED?

FUNDING PARTNERS

Alder Fund	Michael & Leslie Lebeau
Lynn & Bill Agnew	Philanthropic Fund
Anonymous	Michael Milligan &
Averill Park Fund	Jeanne E Fund
Gloria C. Brownell Fund	Paulson-Mallove Family
Croker Family Fund	Fund
Dubois Family Fund	Plan B Fund
Hastings Family Fund	Pleasant Beach Fund
Hillside Fund	Maggi Rogers Fund
Jim & Sarah Hopper	Quail Roost Foundation
Jicana Fund	Saber Fund
Bob & Judy Karr	Sada Ross Fund
Family Fund	Sophia Fund
Klasky Family Fund	

EVALUATION TEAM

Lynn Agnew*	Tom Leigh
Regina Bellody	Susan Lusk
Dina Campeau	Carla Mackey
Jan Carey	Barbara Magusin
Jean Casey	Sonya Marinoni
Eric Cederwall	Michael Milligan
Michael Dagg	Susan Mitchell
Marilyn Dearsley	Bobbie Morgan
Tracy Dickerson	Marina Myles-Worsley
Maria Drury	Molly Nikunen
Christina Fontecchio	Nancy Nolan Transue
Wakefield	Wendy O'Connor*
Susan Guffey	Helen Owens
Marcia Hastings*	Paul Pearson
Jim Hopper, BCF Staff*	Brooke Rufo Hill
Theona Jundanian*	Proctor Schenk
Judy Karr*	Carl Sussman
Mary Kerr*	Ellin Spenser
Omie Kerr	Carol White
Shel Klasky*	Trese Williamson
Debbie Kuffel,	
BCF Staff*	*BCF Grant Committee
Dee Kurtz	Member

BCF would like to recognize and thank the Funding Partners and Evaluation Team member individuals for making the 2016 Community Grant Cycle possible!

Established in 2005, the Community Grants Cycle (CGC) is the heart of the Bainbridge Community Foundation’s grants program. The 2016 year was the most successful CGC in our history. The total grant dollars awarded reflected a 75% increase in funding over CGC funding three years ago. This growth and success is the result of a vibrant and committed community.

This year’s Community Grants Cycle was supported by a record 19 donor advisor partners and one private foundation, the largest number of community partners supporting a CGC funding cycle to date. Five of these nineteen Donor Advised Funds were new partners, joining BCF to support our causes for the first time in 2016. But this community doesn’t just include partner donors, it also includes the dedicated volunteers of our CGC Evaluation Team, which grew to 41 members this year. In turn, this high level of engagement (and the investment of our volunteers and partners) is producing ripple effects in the community: 13 organizations applied for funding from the 2016 CGC that had never applied before – and all of these organizations were funded, reflecting the Foundation’s reach into new and important areas of the community.



COMMUNITY GRANTS CYCLE RECIPIENTS

Bainbridge Artisan Resource Network
 Bainbridge Arts and Crafts
 Bainbridge Chorale
 Bainbridge Island Child Care Centers
 Bainbridge Island Historical Museum
 Bainbridge Island Land Trust
 Bainbridge Island Little League*
 Bainbridge Island Museum of Art
 Bainbridge Island Parks & Recreation
 Bainbridge Island Parks Foundation
 Bainbridge Island Rowing
 Bainbridge Performing Arts
 Bainbridge Public Library
 Bainbridge Schools Foundation
 Bainbridge Youth Services
 Battle Point Astronomical Association
 BI Neighbors*
 Boys & Girls Clubs of King County
 Coffee Oasis
 Dispute Resolution Center of Kitsap County
 EBC- Westsound*
 Friends of Bainbridge Island High
 School Sailing
 Friends of Fort Ward*
 Harmony Hill
 Harrison Medical Center Foundation*
 Holly Ridge Center
 IslandWood
 Island Time Activities
 Island Volunteer Caregivers
 Kids Discovery Museum
 Kids in Concert*
 Kitsap Adult Center for Education
 Kitsap Humane Society
 Kitsap Immigrant Assistance Center*
 Kitsap Legal Services

At-A-Glance

COMMUNITY GRANTS CYCLE 2016

BCF DISCRETIONARY FUNDS:	\$64,750
TRUSTEES' AWARD DOLLARS:	\$7,150
DAF/PARTNER FUNDS:	\$171,761
GRANT RANGE	\$1,000-\$15,100
GRANTS AWARDED	53
FULLY FUNDED	34

TOTAL AWARDED GRANTS IN 2016

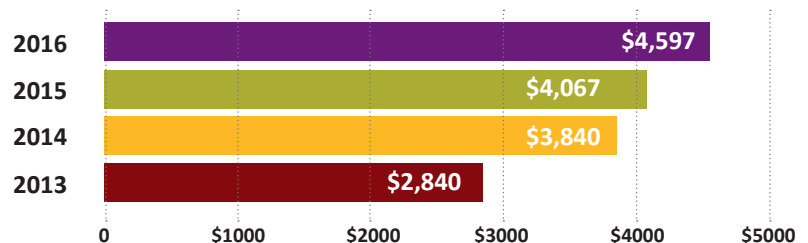
\$243,661

Leadership Kitsap Foundation*
 Marge Williams Center
 Martha & Mary
 North Kitsap Fishline
 Olympic Performance Group*
 One Call for All
 OurGEMS*
 Parkview Services*
 Peacock Family Services
 Salish Sea Expeditions
 Space Craft*

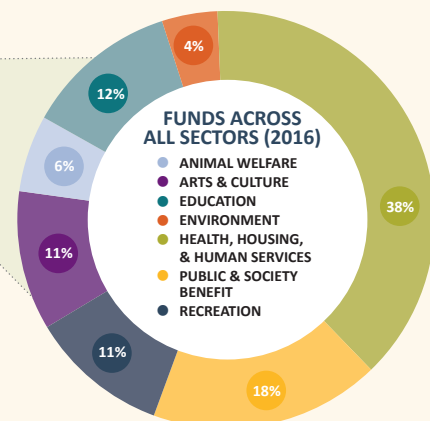
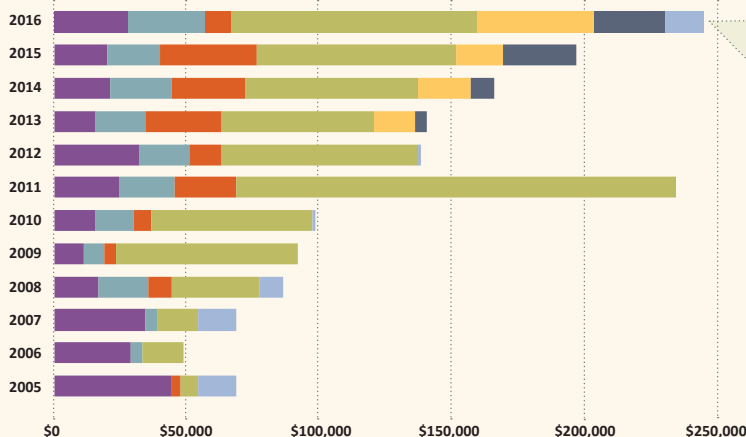
Washington State Smile Partners
 Waterfront Park Community
 Center*
 West Sound Treatment Center
 West Sound Wildlife Center
 West Sound Youth for Christ
 Yama Project, Olympic College
 Foundation
 YWCA of Kitsap County

* First-time applicant/grantee

AVERAGE GRANT AWARD 2013-2016



COMMUNITY GRANTS CYCLE 2005-2016



BCF intentionally makes grants to all sectors of the community, recognizing the importance of balancing the needs of various constituencies.



“There is no such thing as too much community involvement. Allowing every interested and engaged individual, group, and business the opportunity to participate in a meaningful way added to the richness and depth of this project. It also helped to create a sense of ownership and pride in this space.”

– Stacy Marshall, Owen’s Playground, on the opening of Owen’s Playground.

COMPLETED PROJECTS: 2015 COMMUNITY GRANT CYCLE

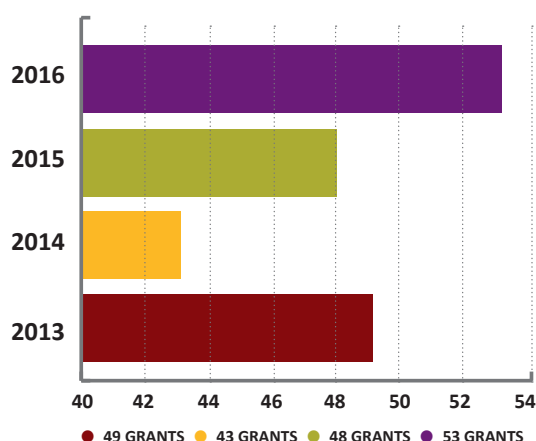
In addition to the exciting results of the 2016 Community Grants Cycle, this autumn the Foundation received Final Reports from grantees of our 2015 Community Grants Cycle. These detailed summary reports provide updates on the effectiveness of last year’s community grants.

► IMPACT OF THE 2015 COMMUNITY GRANT CYCLE

The following accounts provide a *sample* of what our grantee organizations accomplished in and for the community as a result of 2015 CGC funding:

An innovative STEM (Science, Technology, Engineering & Math) curriculum for elementary students was installed in Bainbridge Island schools, so that every elementary-school student in the district spent 50 minutes/week in a STEM Lab exploring STEM concepts and gaining valuable critical thinking skills. Organized around four units (Life Science, Physical Science, Earth and Space Science, and Engineering and Technology), the interactive, hands-on approach to learning was so popular that it replaced PE as the most popular class at one school. (Bainbridge Schools Foundation)

CGC GRANTS AWARDED 2013-2016



Over 6,370 hours of nurturing, enriching childcare were provided to low-income families in our community, to help ensure good nutrition and positive development for children most at risk of falling behind their peers. (Peacock Family Services)

Eighty local seniors were provided with high-quality, low-cost preventative dental care at the Waterfront Park Community Center, a 27% increase over last year. In addition, the program expanded to include its first preschool-age clients, as part of an early intervention strategy for lifelong oral health. (Washington State Smile Partners)

A new water heater at the Bainbridge Cooperative Nursery School is not only more energy efficient than the forty-one-year-old model it replaced, but also provides hot water to bathroom sinks (for hand-washing) for the first time in the School's history. (Bainbridge Cooperative Nursery School)

A collaborative day long Family Art Day co-produced by BIMA and KiDiMu, attracted 550 attendees, more than half of whom were from off-island, demonstrating the increasing reach and attractive power of Bainbridge's arts and cultural organizations. (Bainbridge Island Museum of Art)

At-A-Glance

COMMUNITY GRANTS CYCLE 2015

AVERAGE GRANT:	\$4,067
GRANT RANGE:	\$554 - \$10,000
GRANTS AWARDED:	48
PROPOSALS FULLY FUNDED:	27

TOTAL AWARDED GRANTS IN 2015

\$195,202

Fifteen students and over 40 volunteers from the public participated in an eight-week fieldwork project to map a portion of the historic Yama settlement and identify major residential areas. Nearly 2,500 ceramic, metal, glass, and leather artifacts were recovered from the site, and have been cataloged, photographed, and labeled for preservation and exhibition. (Yama Project, Olympic College Foundation)

A Volunteer Stewardship program mobilized nearly 500 volunteers to provide 3,500 hours of environmental stewardship to public farmland, including removing invasive species, repairing roads and trails, pruning orchards, repairing fences, renovating a home to house farm interns, repairing irrigation systems, and installing a new permaculture compost system. (Friends of the Farms)

By partnering with over 23 other local organizations, IslandWood was able to boost attendance at its 2015 panel of 26 programs and events to nearly double. More than 7,000 members of the community attended IslandWood events in 2015, compared to 3,700 in 2014. (IslandWood)

New energy-efficient ductless heat pumps were installed in each of Village Home's 11 efficiency and 1-bedroom rental units; residents have already reported improved comfort and a nearly 25% reduction in energy needed to heat their homes. (Housing Resources Bainbridge)

Aging and failing windows were replaced at a health and rehab center; improving patient and staff comfort, and increasing ecological and economic sustainability: heating and cooling costs have already dropped at least 11%; annual savings are projected to be between \$12,000 and \$15,000. These funds can be directed to providing essential services to clients. (Martha and Mary)





“Sincere thanks for continuing to believe in and support this program at Sakai Intermediate. Not only does this program help youth develop the ability to understand and engage with conflict in a healthy way, but also it helps in the development of self-confidence and important leadership skills. Your support is a gift to these young people which will last a lifetime.”

– Mary Hancock, Kitsap Dispute Resolution Center, on their Conflict Club

CAPACITY BUILDING GRANTS 2015 & 2016

Now in its fourth year, Bainbridge Community Foundation’s Capacity Building Grants support organizations that are actively striving to improve the efficiency and efficacy of their work by investing in their core operations. Grants focus on supporting an organization’s internal capacity, and fund projects that must be completed within six months. In 2016, the Capacity Building Grants cycle focused on nonprofit Board and staff development in the areas of leadership, budgeting, fundraising, and strategic planning.

► IMPACT OF THE 2015 CAPACITY BUILDING GRANTS

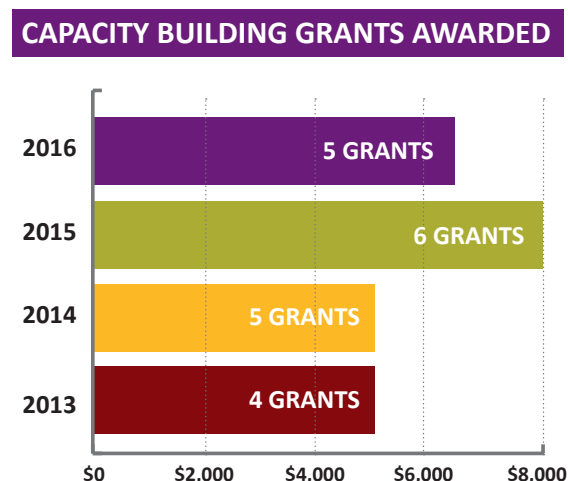
With funding from the 2015 Capacity Building Grants cycle, our six grantee organizations were able to accomplish the following:

The Bainbridge Island Museum of Art received funding to conduct a Board Retreat and hire a professional facilitator to assist leadership as they developed a three year strategic plan for the organization. BIMA, a new organization, operating in “start-up” mode will commitment to guarantee this organization remains a permanent addition to the Bainbridge Island community. ([Bainbridge Island Museum of Art](#))



The Bainbridge Island Land Trust developed an annual work plan matrix to coordinate the efforts of Board, Staff, and committees as they work together to realize the organization's new strategic plan. The Bainbridge Island Land Trust combined BCF Capacity Building Grant with a companion grant from the Land Trust Alliance to hire an outside consultant who reviewed the strategic plan. In addition, this led to a revision and further refinement of the Strategic Plan. (Bainbridge Island Land Trust)

Bainbridge Island Special Needs Foundation hired a professional facilitator to lead a series of Board planning meetings, including consultations with key community stakeholders. The organization initially set out to address organizational needs and educate themselves about fundraising however, once they began the process of exploring organizational structure and efficacy, they discovered sufficient issues to absorb the allotted time. BISNF focused on defining their constituency, exploring its changing needs, establishing new partnerships and attracting new Board members, and identifying opportunities to expand and improve operations. (Bainbridge Island Special Needs Foundation)



At-A-Glance

CAPACITY BUILDING CYCLE 2016

GRANT AWARDED 2016: \$6,500
GRANT RANGE: \$500 to \$1,500
GRANTS AWARDED: 5

- Six eligible proposals were received; five of these were funded. Two of the five successful proposals were fully funded.

CAPACITY BUILDING CYCLE 2015

GRANT AWARDED 2015: \$8,000
GRANT RANGE: \$1,000-\$1,500
GRANTS AWARDED: 6

- Number of grantees who met expectations: All but one organization completed their proposed capacity-building projects during the grant period; the one organization that did not complete proposed activities by July completed the project by the end of 2015.

The Friends of the Farms received funding to hire a professional facilitator to plan and lead a nonprofit fundraising retreat to train Board members. The facilitator identified areas for improvement in tracking donor cultivation and stewardship, insights into meaningful relationships with donors, and establish strategies to increase donor retention. The Board emerged energized and inspired. (Friends of the Farms)

The YWCA of Kitsap County hired a professional consultant to survey staff and Board members, and implemented data to inform a day long strategic planning session which will guide the organization for the next five years. As a result, YWCA emerged with a new five-year strategic plan and Board development plan, each plan with measurable outcomes. They also recruited four new Board members. Turnover delayed the production of work plans to achieve the goals of the strategic plan. These are being developed now. (YWCA of Kitsap County)



2016 SCHOLARSHIPS

Bainbridge has awarded over \$130,000 in scholarships to date. In 2016, Bainbridge Community Foundation awarded nine scholarships, totaling \$25,000. Six of these scholarships were awarded to Bainbridge High School students:

Bainbridge High School Class of 1961 Scholarships:

Jordan Davis, *Linfield College*

Amanda Comeau, *Arizona State University*

Bainbridge High School Class of 1962 Scholarships:

Ana Bucy, *Occidental College*

Taylor Petersen, *Gene Juarez Academy*

Bainbridge Music & Arts Legacy Scholarship:

Tana Corsetti, *University of Utah*

George and Betty Munro Scholarship:

Kathryn Tibbens, *Belmont University*



► WENDY JACKSON HALL SCHOLARSHIPS



In addition, three Wendy Jackson Hall Scholarships were awarded to outstanding artists from across Washington State. These scholarships are renewable, allowing recipients to apply for a second year of funding. In 2016,

the Wendy Jackson Hall Scholarships were awarded to the following students:

Carly Lynn McCartney, *Western Washington University* received a \$7,500 scholarship for the second time.

Lily Aksan, *The New School: Parsons School of Design* received a \$7,500 scholarship for the first time.

Naira Diptee, *Florida State University* received a \$5,000 scholarship for the first time.



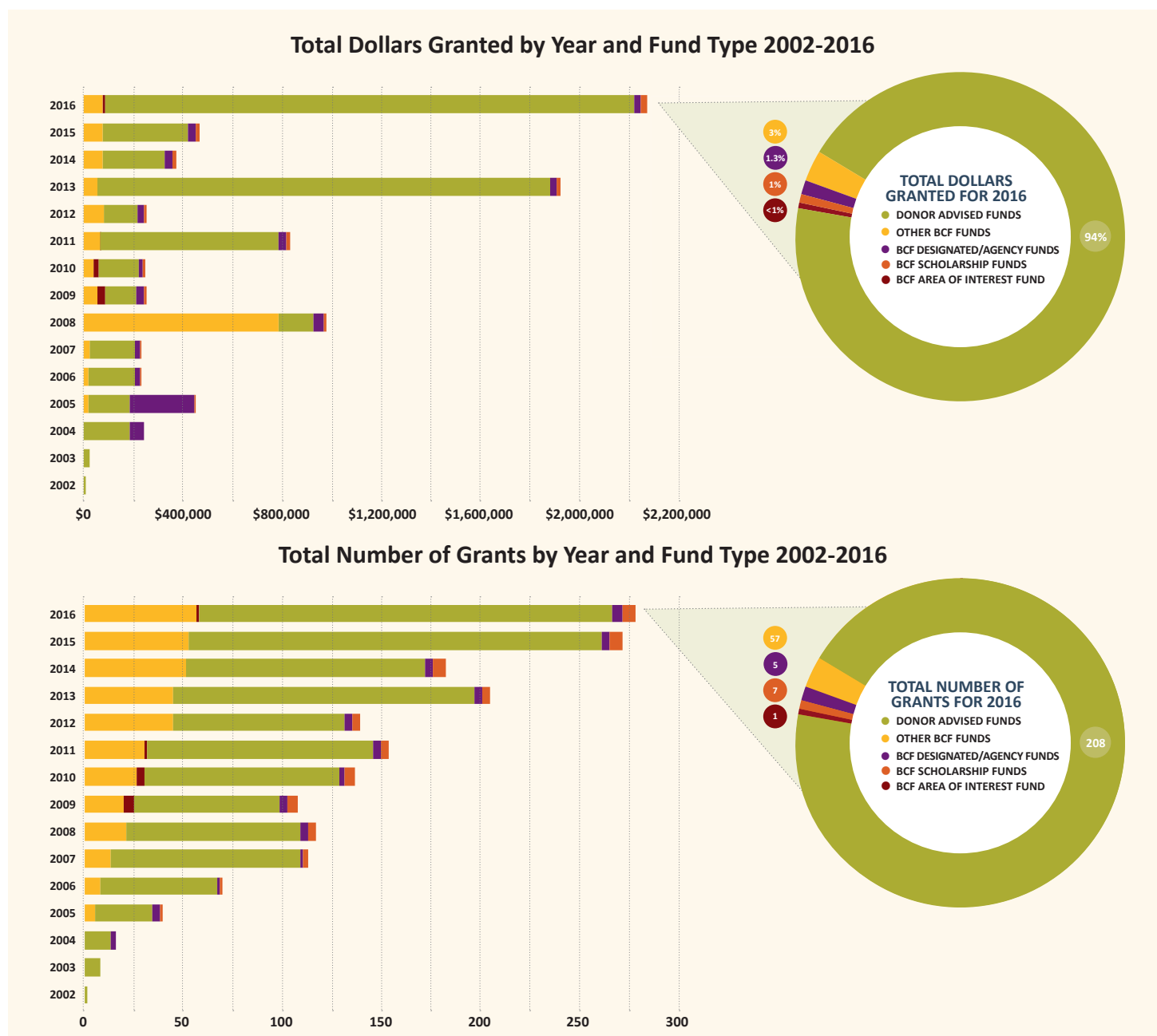
Photos with scholarship recipients: (top) Ralph Munro & Kathryn Tibbens, (middle) Ana Bucy, (bottom) Tana Corsetti

BCF HISTORY OF GRANTMAKING

► OVERALL GRANTMAKING HIGHLIGHTS

During 2016, 278 grants of all types were made totaling a record \$2,272,966. During this year, we had four **Agency Fund** grants of \$18,015 and one **Designated Fund** grant of \$11,266.57. In keeping with past practice, Agency Funds and Designated Funds are added together for reporting in the graphs below.

Cumulatively through December 2016, Bainbridge Community Foundation has awarded 1,838 grants that total \$8,791,468 since our inception in 2001.





bainbridgecf.org

PHYSICAL ADDRESS:

Bainbridge Community Foundation
149 Finch Place SW
Bainbridge Island, WA 98110
Telephone: 206.842.0433
Email: info@bainbridgecf.org

MAILING ADDRESS:

Bainbridge Community Foundation
221 Winslow Way West #305
Bainbridge Island, WA 98110