



2016

REPORT TO THE COMMUNITY

Bainbridge Community Foundation



BAINBRIDGE
Community Foundation



Board of Trustees

Barbara Swartling, *President*
Marcia Hastings, *Vice-President*
Jason Taylor⁺, *Treasurer*
Wendy O'Connor, *Secretary*

Cris Beattie
Eric Cederwall*
David Harrison⁺
Theona Jundanian
Judy Karr
Mary Kerr
Omie Kerr
Shel Klasky
Paul Merriman
Carl Middleton*
David Moen⁺
Proctor Schenk
Chris Snow
Alex Torres
Drew Wolff*

*Retired 2016

⁺Joined 2017

BCF Staff

Jim Hopper, *Executive Director*
Debbie Kuffel, *Program & Finance Officer*
Brigette Yates, *Development Officer*



BCF is accredited by the U.S. Council on Foundation's Community Foundations National Standards Board (CFNSB). We are confirmed in compliance with the National Standards for U.S. Community Foundations, a distinction that conveys a rigorous commitment to transparency, excellence, stewardship and leadership in philanthropy.



Illustrations by Tim Corey, Calibri Facilitation,
www.colibrifacilitation.com



*Bainbridge Community Foundation
represents the best in foundation
work and the best in community.*

*Through their strategic funding
and the convening of nonprofits,
they encourage collaborations and
partnerships. They work to elevate
philanthropy in our community as
well as the nonprofit sector as a
whole. They are creative thought
leaders who help shape our sector
and our work.*

— Susie Burdick, Executive Director,
Kids Discovery Museum





Welcome

Thank you for your support and for taking time to learn more about the Bainbridge Community Foundation. This past year was filled with significant accomplishments that will help shape the path of the Foundation's work moving forward.

Bainbridge Community Foundation has an unwavering vision of a Bainbridge Island where neighbors work together in a collaborative effort to support one another and ensure that our Bainbridge community is meeting the needs of all.



"Communities like ours are a treasured resource. Through intentional acts, we can help this community grow, diversify, and evolve, while continuing to affirm the same fundamental strengths it has today."

Communities like ours are a treasured resource. Through intentional acts, we can help this community grow, diversify, and evolve, while affirming the same fundamental strengths it has today. We will engage our neighbors in opportunities to learn about the community, give to the community through grants that support our important nonprofit agencies, serve the community through hands-on volunteer engagement, and invest in the future of BCF and the Bainbridge Island community for the benefit of generations to come.

We forecast the next three years to experience the largest growth to date for Bainbridge Community Foundation. With the guidance and oversight of a committed board of trustees, we are creating a team-based staffing model to expand our programs and activities to reach out in a deeper, more meaningful way to our donors and prospective donors, volunteers, grantees, and other members of the community.

In our strategic planning process completed in 2016, we divided our work into four areas, putting forward a sustainable program in each that will produce long-lasting outcomes in our community.

- **LEARN:** We will foster a community of engaged, informed people inspired to help others; so that members of our community know how they can make a difference and are inspired to act.
- **GRANT:** We will invest in the nonprofit sector to effectively serve the needs of the community; so that well-supported nonprofits are enhancing the community, and improving their field of work.
- **SERVE:** We will open up access to volunteer opportunities to aid in the delivery of important community services; so that an active volunteer corps is engaged in community building.
- **GROW:** We will build an endowed organization with the necessary resources to support the community; so that a permanent infrastructure ensures community health and longevity.

The support of people like you has brought us this far, and we invite you to continue with us on this path toward a brighter future!

Sincerely,

Barbara Swartling
BCF Board of Trustees

Jim Hopper
Executive Director



Inspiring People of 2016

Bainbridge Community Foundation recognized three honorees at its eighth annual Inspiring People Philanthropy Celebration. Cynthia Sears, The Suquamish Tribe, and the Fort Ward Youth Advisory Committee were recognized for their significant acts of philanthropy, leadership, and community-building.

Cynthia Sears

Outstanding Bainbridge Philanthropist

In the nearly 30 years that **Cynthia Sears** has called Bainbridge Island home, her remarkable generosity, spirit, and encouragement have helped build a thriving and vibrant arts and cultural community. Cynthia had the extraordinary vision to create the Bainbridge Island Museum of Art, a collecting museum with a focus on artists and collections from the Puget Sound region. Her generosity extends to supporting education, social services, and more. Cynthia finds giving most satisfying when her gift helps a project reach completion or encourages others to give. As she accepted her award at the Celebration, she shared a guiding principle in giving that is particularly meaningful to her – “you must add your light to the sum of light.”

The Suquamish Tribe

Outstanding Philanthropic Organization

The Suquamish Tribe were recognized for their longtime tradition of giving generously to help others, especially the most vulnerable populations. Through the Port Madison Enterprises Fund and the Suquamish Foundation, the Tribe have contributed millions of dollars in the spirit of helping our community by supporting education and poverty alleviation, arts, health care, public safety, recreation,

social services and more. Recently the Tribe received the NOAA Excellence in Restoration Award, for their coastal restoration work in Eagle Harbor. Their dedication to revitalizing culture and community and environmental preservation will enhance countless lives for generations to come.

Fort Ward Youth Advisory Committee

Outstanding Young Philanthropists

In 2014 neighborhood friends Aila Ikuse, Kate Merifield, Mark Dettman, and Erik Appleberry formed the **Fort Ward Youth Advisory Committee**. As sophomores in high school, they dedicated themselves to raising money for the restoration of a historic brick bakery building for use as the first public hall in the south end of Bainbridge Island. Over the last two years, these remarkable young people raised funds through grant awards, private donations, sales of shirts, prints, and mugs, and reached more than half of their goal. Though the group have now graduated from Bainbridge High School and embarked upon a new phase in their lives, they left a great parting gift to their community and have ensured that the project will carry on in the capable hands of new youth advisory committee members Mallory Browne, Stella Streufert, Rachel Fox, Marina Ikuse and the Friends of Fort Ward.

Photos (left to right): 1) The Suquamish Tribe, 2) Cynthia Sears and 3) Fort Ward Youth Advisory Committee.

Grants & Scholarships

BCF made 278 grants from January to December totaling a record \$2,272,966. In 2016 BCF broke the prior year record number of funding partners and community volunteers during our Community Grants Cycle. By the end of 2016, BCF had awarded nearly \$8.8 million in grants since its founding in 2001.

Community Grant Cycle

In our Community Grants Cycle (CGC) alone, BCF granted \$243,661 to fifty-three nonprofits. Thirty-four proposals were fully funded, the highest amount in the Foundation's history (for the second year in a row). Twelve of the organizations that received grant awards were new applicants. The 2016 CGC was supported by forty-one volunteers serving on our Evaluation Team, and by twenty of the Foundation's donor advisors and two private foundations partnering in funding the grant requests.



“Bainbridge Community Foundation recognizes the integral role that nonprofits play on Bainbridge, celebrates the incredible variety of the services we collectively provide, and dedicates itself every day to helping ensure that we can carry out our own missions successfully.

– Lindsay Masters, Executive Director, Bainbridge Arts & Crafts

Photos Courtesy: (top left) BARN, (top right) Kitsap Humane Society, (bottom) Lindsay Masters

2016 Grant Recipients

A Touch of Love Foundation
 American Indian College Fund
 American Rivers
 Amnesty International
 Arts & Humanities Bainbridge
Bainbridge Artisan Resource Network*
Bainbridge Arts & Crafts*
Bainbridge Chorale*
Bainbridge High School*
Bainbridge Island Boys & Girls Club*
Bainbridge Island Historical Museum*
Bainbridge Island Land Trust* •
Bainbridge Island Little League*
Bainbridge Island Museum of Art*
Bainbridge Island Parks Foundation*
Bainbridge Island Parks Foundation for Bainbridge Island Metro Park & Recreation District*
Bainbridge Island Parks Foundation for Waterfront Park Community Center*
Bainbridge Island Rowing*
 Bainbridge Island Senior Community Center
 Bainbridge Island Special Needs Foundation
Bainbridge Performing Arts*
Bainbridge Public Library*
Bainbridge Schools Foundation*
Bainbridge Youth Services*
Battle Point Astronomical Association*
 Beechwood School California Family Foundation
 Belmont University
 Bethany Lutheran Church
 BI Child Care Centers
BI Village (Island Neighbors)*
 Bloedel Reserve
 Burlington Rotary Foundation
 Chief Seattle Club
 Childhaven
 Clarke School for the Deaf
 Classical King FM 98.1
 Conservation NW

Consumer's Union
 Doctors Without Borders
Eastside Baby Corner*
 Emory University
 Florida State University
Friends of BI High School Sailing*
Friends of Fort Ward*
 Friends of Seattle Waterfront
Friends of the Farms•
 Gene Juarez Beauty Schools LLC
 Green Plate Special
 Habitat for Humanity
Harmony Hill Retreat Center*
Harrison Medical Center Foundation*
 Heifer International
Holly Ridge Center*
Housing Resource Bainbridge* •
 Hyla Middle School
 Island Neighbors
 Island Time Activities
 Island Volunteer Caregivers
IslandWood*
 KCTS
Kids Discovery Museum*
Kids in Concert*
Kitsap Adult Center for Education*
Kitsap Community Foundation for Spacecraft*
 Kitsap Dispute Resolution
Kitsap Humane Society*
Kitsap Immigrant Assistance Center*
Kitsap Legal Services*
 KUOW-Puget Sound Public Radio
 Lake Tahoe Fund
Leadership Kitsap Foundation*
Marge Williams Center*
Martha & Mary*
 Mercy Corps
 Montessori Country School
 National Park Foundation
 Nordic Heritage Museum
North Kitsap Fishline*
 Northwest Children's Fund
 Occidental College
Olympic College Foundation*
Olympic Performance Group*

One Call for All*
 Operation Nightwatch
OurGEMS*
 OUT There Adventures
Parkview Services*
 PATH
 PAWS of Bainbridge Island / North Kitsap
Peacock Family Center*
 Planned Parenthood of the Great NW
 Poulsbo-NK Rotary Foundation
 PTO Odyssey School
Salish Sea Expeditions*
 Save the Children
 Seattle Aquarium Society
 Seattle Repertory Theater
 Seattle Shakespeare Company
 Smithsonian Institution
 South Yuba River Citizens League
 Southern Poverty Law
 Stanford University School of Law
Tenants Union of Washington State•
 The Carter Center
 The Center for the Art of Translation
 The Coffee Oasis
 The Mountaineers
 The New School: Parsons School of Design
 The Stanford Fund
 Trust for Public Land (Washington State)
 U.S. Fund for UNICEF
 University of Utah
 Volunteers in Asia
Washington State Smile Partners*
West Sound Treatment Center*
West Sound Wildlife Shelter*
West Sound YFC*
 Western Washington University
 WSU 4-H Clubs & Affiliated 4-H Organizations
 Yes! Magazine
YWCA of Kitsap County*

• Capacity Building Grant
 * Community Grant Cycle

CGC Evaluation Team

Lynn Agnew*, Regina Bellody, Dina Campeau, Jan Carey, Jean Casey, Eric Cederwall, Michael Dagg, Marilyn Dearsley, Tracy Dickerson, Maria Drury, Christina Fontecchio Wakefield, Susan Guffey, Marcia Hastings*, Jim Hopper, BCF Staff*, Theona Jundanian*, Judy Karr*, Mary Kerr*, Omie Kerr, Shel Klasky*, Debbie Kuffel, BCF Staff*, Dee Kurtz, Tom Leigh, Susan Lusk, Carla Mackey, Barbara Magusin, Sonya Marinoni, Michael Milligan, Susan Mitchell, Bobbie Morgan, Marina Myles-Worsley, Molly Nikunen, Nancy Nolan Transue, Wendy O'Connor*, Helen Owens, Paul Pearson, Brooke Rufo Hill, Proctor Schenk, Carl Sussman, Ellin Spenser, Carol White, Trese Williamson *BCF Grant Committee Member



Trustees' Award

BCF promotes collaboration between nonprofits through our Trustees' Award. The 2016 Trustees' Award funded Bainbridge Youth Services for The Healthy Youth Alliance project, an ongoing partnership with Raising Resilience, Rotary Club of Bainbridge Island, the Bainbridge Island School District, and the Boys and Girls Club. Local teens will continue to benefit from the Alliance's culture-changing efforts to address and positively impact the alarming issues of increasing depression, anxiety, and substance abuse amongst Island teens. The funding received will allow the Alliance to engage in planning in order to increase their collective impact over the long-term.

Capacity Building Grants

This program, now in its fourth year, helps organizations become more effective by increasing their internal capacity. These grants fund board and staff development in the areas of leadership, budgeting, fundraising and strategic planning. At the close of 2016, the following five organizations received funding for programming that will strengthen their operations and efficiency.

- Bainbridge Island Land Trust
- Bainbridge Island Museum of Art
- Bainbridge Island Rowing
- Bainbridge Island Special Needs Foundation
- YWCA of Kitsap County

2016 Scholarships

In 2016, Bainbridge Community Foundation awarded nine scholarships, totaling \$25,000. Six of these scholarships were awarded to Bainbridge High School students:

Bainbridge High School Class of 1961 Scholarships:
Jordan Davis & Amanda Comeau

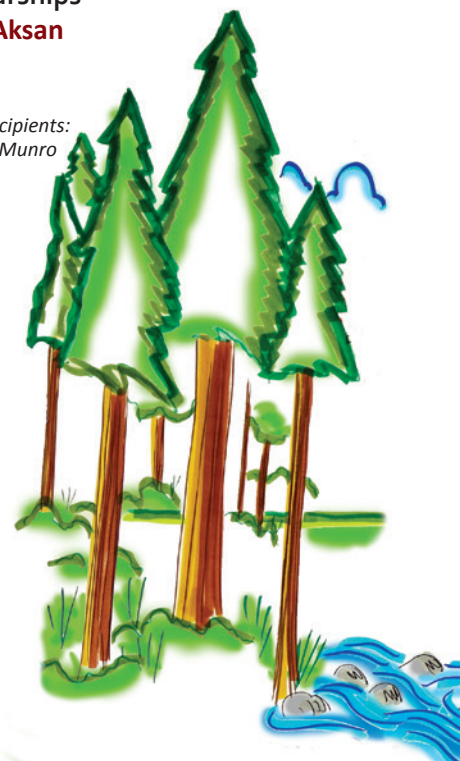
Bainbridge High School Class of 1962 Scholarships:
Ana Bucy & Taylor Petersen

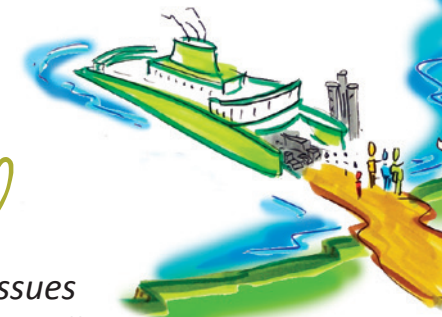
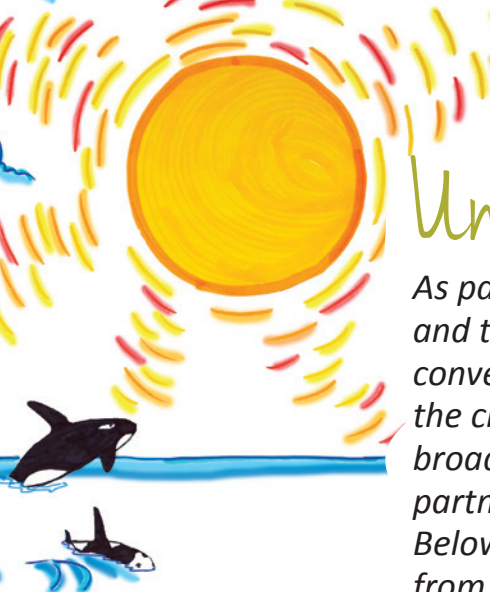
Bainbridge Music & Arts Legacy Scholarship:
Tana Corsetti

George and Betty Munro Scholarship:
Kathryn Tibbens

Wendy Jackson Hall Scholarships
**Carly Lynn McCartney, Lily Aksan
& Naira Diptee**

*Photos Left to right with scholarship recipients:
1) Ana Bucy, 2) Tana Corsetti, 3) Ralph Munro
& Kathryn Tibbens.*





Understanding Our Island

As part of our continuing efforts to stay current on issues and trends in our local nonprofit community, BCF annually convenes and surveys local nonprofit leaders to better understand the challenges and opportunities facing individual organizations, the broader context in which they operate, and to help us and our partners anticipate and meet evolving needs. Below are some of the highlights from that survey.

EDUCATION



Sector Health*

Arts, Culture & Recreation	TRENDING BELOW
Environment / Animal Welfare	TRENDING NEUTRAL
Education	TRENDING BELOW
Health, Housing & Human Services	TRENDING ABOVE

*Measured by: Ability to Meet Demand, Fundraising Success, Fundraising Expectations, Program Growth, Program Expansion, & Success in Professional Development 2016 compared to 2015.

“WHAT DO OUR RESIDENTS NEED TO MAKE THEIR LIVES EASIER AND TO FEEL MORE CONNECTED? WE WILL BE STUDYING THESE QUESTIONS AND LOOKING FOR WAYS TO HELP”

“A strong educational ecosystem makes us a strong community.”

Steady The Course

1

The Education Sector was facing a challenging year with increases in demand for specialty education, challenges in accessing collaboration, and competition for raising money. Despite this, more than half plan to increase the quality and depth of their programming.

“WE WANT TO EXPAND OUR AUDIENCE, STREAMLINE OUR SYSTEMS, AND INCREASE EDUCATIONAL PROGRAMS TO RAISE AWARENESS IN KITSAP COUNTY.”

ARTS / CULTURE / RECREATION



“Arts, Cultural, and Recreational opportunities help create for...”

Cautious Rising

2

The Arts, Culture & Recreation Sector celebrates numerous successful programs, but operationally continues to be challenged in fundraising, volunteer recruitment, and limited facilities.





Rising Demand

85%

of organizations across all sectors experienced an increase in demand for their services. In the end, 58% were able to meet the demand.

A Call for Action

93%

need more money to meet demand. 53% need more volunteers.



"DEMAND FOR OUR SERVICES IS VERY HIGH, AND CONTINUES TO INCREASE. WE ARE MORE FOCUSED ON CONTINUING TO GROW OUR CORE SERVICES THAN ON ADDING NEW SERVICES OR NEW AUDIENCES"

"Connecting people to nature helps them understand the bigger picture of sustainability."



community all people."

"We need to live and talk like we are one community."

THIS WAY!

Convening and Connecting

3

In 2016, the Health & Human Services Sector was strong in its ability to grow programs, improve efficiencies, and expand. It seeks to grow access to emergency services, especially those most vulnerable including immigrants, the medically fragile, LGBTQ community, middle school teens, and low income seniors.

ENVIRONMENT/ANIMALS/ OTHER SECTORS



Keeping Momentum

4

The Environment & Animal Welfare Sectors have had a consistently high demand – and coupled with that, a high level of productivity. Seventy-seven percent of them planned to increase volunteer time to meet future demand.



"OUR CAPACITY BUILDING WORK HAS BEEN EXTREMELY EFFECTIVE AND HAS GIVEN HOPE TO THE NUMEROUS AGENCIES WHO DESPERATELY NEED MORE ESSENTIALS TO SATISFY THE NEEDS OF OUR MOST VULNERABLE POPULATION"

HEALTH/HOUSING/ HUMAN SERVICES

QUALITY SERVICES + SUPPORTS



INTERGENERATIONAL CONNECTIONS

- BETTER COORDINATION
- AWARENESS OF NEED
- COMMUNICATION and MARKETING
- PROFESSIONAL DEVELOPMENT
- MORE OUTREACH
- COMPLEX NEEDS



BCF Partners & Contributors

Our ability to endorse and support relevant nonprofit work in our community is closely tied to thoughtful philanthropy of our donors, friends and community partners. We are deeply grateful for the generosity of those who share our passion for supporting and enriching the lives of all who are part of the broader Bainbridge community and beyond. We are inspired by their support and leadership in building a stronger, more vibrant community for generations to come.

Spotlight: Bainbridge Youth Sports Access Fund

Youth sports are vital to the health and well-being of students, but many Bainbridge students cannot afford the cost of participation fees. The Bainbridge Youth Sports Access Fund was established as a fundraising vehicle to eliminate the financial barriers to Bainbridge High School youth participating in sports. Grant funds are distributed to Bainbridge High School, and subsequently to youth in need via the School's existing confidential protocol.

With the help of a gift from a donor advised fund at BCF, during the 2016/17 school year, Bainbridge High School supported a total of 36 student athletes with a total of \$6,438 in scholarship support. From cross-country, girls' soccer, swim, and football in the fall to basketball and gymnastics in the winter to track and tennis in the spring, many more Bainbridge high school students are benefiting from donors' support of the Bainbridge Youth Sports Access Fund. Some of the reasons why high school sports benefit students include:

- Fitness ■ Improved Academics ■ Persistence, Patience and Practice ■ Teamwork and Cooperation**
- Social Relationships ■ Leadership Skills ■ Time Management ■ Success Mindset**



Funds at Bainbridge Community Foundation

Alder Fund
Averill Park Fund
Bainbridge Music & Art Legacy
Scholarship
Bainbridge Youth Sports Access Fund
BARN Fund
BCF Community Fund
BCF Community Response Fund
BCF Endowment Fund
BCF Housing Action Fund
BIAHC Amy Award for Emerging
Artists
BIAHC Island Treasure
Thomas & Karen Beierle Fund
BHS Class of 1961 Scholarship
BHS Class of '62 Scholarship Fund
Gloria Collins Brownell Fund
BSF Elizabeth Orr Fund
Croker Family Fund
Cunningham Family Fund

Stephen & Harriet Davis Fund
DuBois Family Fund
The Emile Fund
The Fund for Bainbridge Public
Schools
Harald Hurlen Fund
Hastings Family Fund
Heyday Fund
Hilderman Family Fund
Hillside Fund
Holt Webster Fund
Hot Dog!
Island Cultural Enrichment Fund
Jicana Fund
The Jupiter Fund
Bob & Judy Karr Family Fund
Klasky Family Fund
Laugh Cry Dream Read Fund
Leslie & Michael Lebeau
Philanthropic Fund

Maggi Rogers Fund
The Mathurin Fund
Michael Milligan & Jeanne E. Fund
George & Betty Munro Scholarship
Neighborhood Home @ Serenity
Paulson-Mallove Family Fund
Oifan & Barry Peters Designated Fund
Peters Fund for a Sustainable
Community
Plan B Fund
Pleasant Beach Family Fund
H. Clay & Sherry Roberts Fund
Saber Fund
Sada Ross Fund
Sebastain Galpert Memorial Fund
Sophia Fund
Waypoint Capital Fund
Webster Family Fund
Wendy Jackson Hall Scholarship



“Our time volunteering for the Grant Cycle provided a great opportunity to meet the dedicated leaders of the many nonprofit organizations providing important services to Bainbridge Islanders. We were so grateful to have the opportunity to learn more!

— Carolyn and Tom Leigh

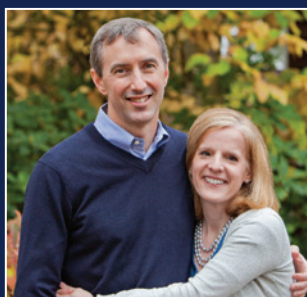
Photos Courtesy: (top left) BARN, (top right) BI Land Trust, (bottom) Carolyn & Tom Leigh

2016 Contributors to Bainbridge Community Foundation

Richard & Sharon Abrams Fund
at The Seattle Foundation
Lynn & Bill Agnew
Richard & Constance Albrecht
Alder Fund at BCF
Amazon Smile Foundation
Ann Pearl Catering
An Anonymous Fund at The Seattle
Foundation
Anonymous (2)
An Anonymous Family Foundation
Argonaut Fund at Fidelity Charitable
Averill Park Fund at BCF
Pat Baillargeon
Bainbridge Island ACE Hardware
Robert W. Baird & Co. Inc.
Bill Baran-Mickle
Cris & Rob Beattie
Karen & Tom Beierle
Carol Bell
Bart Berg
Anne Browne
Gloria Collins Brownell Fund at BCF
The Cambia Health Solutions Fund of
The Oregon Community Foundation

Patsy Campbell
Robert & Sharon Carter
Casey Family Programs
Eric Cederwall
Jim & Faith Chapel
Charles Schwab & Co.
Radolph & Paula Chuka
Colleen & Steve Chupik
Andre & Charleah Couckuyt
Croker Family Fund at BCF
Tom & Adrienne Crowley
Gary & Shirley Cummings
Tom & Suellen Cunningham
Cunningham Family Fund at BCF
Steve & Harriet Davis
Virginia Davison
Wendy del Valle
Shane & Katie Dir Fund
Beulah Downing & Dennis Carlson
Fred H & Mary S Dore Foundation
Everett & Bernie DuBois
DuBois Family Fund at BCF
Troy Dye
Janie & Chuck Ekberg
Christian Ericksen

Scott Farwell
Barbara & Allan Ferrin
Ellen & James Fountain
Jim & Carol Furman
Mary Jane Goodrich
Laura Gowen
Judy & Leroy Grubb
Susan Guffey
Sarah Guthu & Cassidy Zimmerman
Bonnie & Richard Hagerman
Barb & Dick Haiduck
David & Cindy Harrison
The Don & Jannette Hastings Family
Memorial Fund at The Seattle
Foundation
Marcia & Doug Hastings
Hastings Family Fund at BCF
Estate of Charles F. Hawk
Hillside Fund at BCF
Steve Hochman
Jim & Sarah Hopper
Coral & Marshall Jacobsen
Jicana Fund at BCF
Wini Jones
Theona Jundanian & Tim Dore



“We support Bainbridge Community Foundation because of its dedication to our community and to bringing Bainbridge together. BCF creates opportunities to inform and connect everyone in our community. It facilitates the growth of a vibrant community by combining the energy of dedicated and dynamic Bainbridge citizens with opportunities to engage with our vital nonprofit sector.”

— Drew Wolff and Noelle Cooper

Photos Courtesy: (top left) BI Parks, (top right) EBC Westsound, (bottom) Drew Wolff & Noelle Cooper

Bob & Judy Karr
 Bob & Judy Karr Family Fund at BCF
 Mary & Peter Kerr
 Omie & Larry Kerr
 Klasky Family Fund
 Shel & Arleen Klasky
 Kondracke Family Foundation
 Debbie & Tom Kuffel
 Leslie and Michael Lebeau
 Philanthropic Fund at BCF
 Tom & Caroline Leigh
 Jim Lombard
 Barbara & Frank Magusin
 Sallie & Andy Maron
 Eleanor Mathisen
 Eric & Cheryl Mauer
 Curt McCauley
 Gus & Judy McCutchen
 Paul & Suzanne Merriman
 Marjorie & Robert Meyer
 Michael Milligan & Jeanne E. Fund
 Carl & Salli Middleton
 David & Fran Moen
 Ralph Munro
 Ellen Nakata
 Larry & Sandy Nakata
 Bob & Janice O'Brien
 Wendy & Peter O'Connor
 Jay Oleson & Jill Cody
 One Call for All
 Paulson-Mallove Family Fund at BCF
 Mack & Ann Pearl
 Doug & Cassie Picha
 Plan B Fund at BCF
 Pleasant Beach Family Fund at BCF
 Andrew & Loveta Price
 Claude & Janet Robinson
 Maggi Rogers Fund at BCF
 Sada Ross Fund at BCF
 Saber Fund at BCF
 Gary & Cynthia Sakuma
 Proctor & Deborah Schenk
 Jacob Schloss
 William & Madeleine Schwarz
 Kate Scott
 Michael Scott
 Chris & Cameron Snow
 Sophia Fund at BCF
 Terry Spear & Janet Goodrich Spear
 Frank & Mary Stowell
 Andrew Strom
 Jack & Carole Sutherland
 Barbara & David Swartling
 T. Rowe Price
 Jason & Sara Taylor
 Kathleen & Rod Taylor
 Alex & Leslie Torres
 Veterane Family Foundation

Elaine & Paul VonRosenstiel
 Gail Wade
 Connie & Bill Waddington
 Liz & Fred Walters
 Lael Wedekind
 Carol & Sandy White
 Drew Wolff & Noelle Cooper
 Marina Worsley
 Ann Wyckoff
 Ed Zimney & Sandy Schubach

GIFTS TO THE COMMUNITY RESPONSE FUND

Richard & Constance Albrecht

GIFTS TO THE HOUSING ACTION FUND

Richard and Sharon Abrams Fund at
 The Seattle Foundation

GIFTS TO THE BCF ENDOWMENT FUND

Jason & Sara Taylor
 Drew Wolff & Noelle Cooper

GIFTS IN HONOR OF MAGGI ROGERS

William & Madeleine Schwarz

GIFTS IN HONOR OF JEANNE E

Paul & Suzanne Merriman

GIFTS IN HONOR OF CATHERINE ROHRBACK

Jason & Sara Taylor

GIFTS IN HONOR OF HOWARD WYATT

Ralph Munro

GIFTS IN HONOR OF ROBERT B. WADE

Gail Wade

GIFTS IN HONOR OF MORTON & MARGEURITE KONDRACKE

Kondracke Family Foundation

GIFTS TO THE HOT DOG! FUND

Mary Jane Goodrich
 Terry & Janet Spear

GIFTS TO THE CLASS OF 1961 SCHOLARSHIP

Andre & Charleah Couckuyt
 Gary & Shirley Cummings
 Troy Dye
 Christian Ericksen
 Scott Farwell
 Ellen & James Fountain

Judy & Leroy Grubb
 Bonnie & Richard Hagerman
 Coral & Marshall Jacobsen
 Jim Lombard
 Curt McCauley
 Gus & Judy McCutchen
 Marjorie & Robert Meyer
 Ralph Munro
 One Call for All
 Claude & Janet Robinson
 Jacob Schloss
 Kate Scott
 Kathleen & Rod Taylor
 Gail Wade
 Connie & Bill Waddington
 Lael Wedekind

GIFTS TO THE BHS CLASS OF 1962 SCHOLARSHIP

Anonymous
 Robert & Sharon Carter
 Radolph & Paula Chuka
 Eleanor Mathisen
 Eric & Cheryl Mauer
 One Call for All
 Gary & Cynthia Sakuma
 Andrew Strom
 Connie & Bill Waddington

CGC Funding Partners

Alder Fund
 Lynn & Bill Agnew
 Anonymous
 Averill Park Fund
 Gloria C. Brownell Fund
 Croker Family Fund
 Dubois Family Fund
 Hastings Family Fund
 Hillside Fund
 Jim & Sarah Hopper
 Jicana Fund
 Bob & Judy Karr Family Fund
 Klasky Family Fund
 Michael & Leslie Lebeau Philanthropic
 Fund
 Michael Milligan & Jeanne E. Fund
 Paulson-Mallove Family Fund
 Plan B Fund
 Pleasant Beach Fund
 Maggi Rogers Fund
 Quail Roost Foundation
 Saber Fund
 Sada Ross Fund
 Sophia Fund

*Please note that we make every effort to
 capture the above information correctly.
 We sincerely apologize for any errors
 or omissions. If you have encountered
 an error or omission, please contact the
 Foundation office. Thank you.*

Asset Development

BCF Assets grew in 2016 by \$2.1 million. This growth was offset by a record grantmaking year in which more than \$2.2 million was distributed out to important community causes. Thus, BCF ended 2016 with a corpus of \$10.83 million.

Fund Growth

Wise investing is critical to the long term success of the Foundation and to helping us our mission and the vision of our donors. We work to ensure our investments generate income, while mitigating potential risks.

For the long term, we want to ensure that the assets grow in a manner that will ensure positive returns net of fees, distributions, and when applicable, grants. Our finance committee regularly reviews investment performance and approves the strategy in partnership with our investment manager.

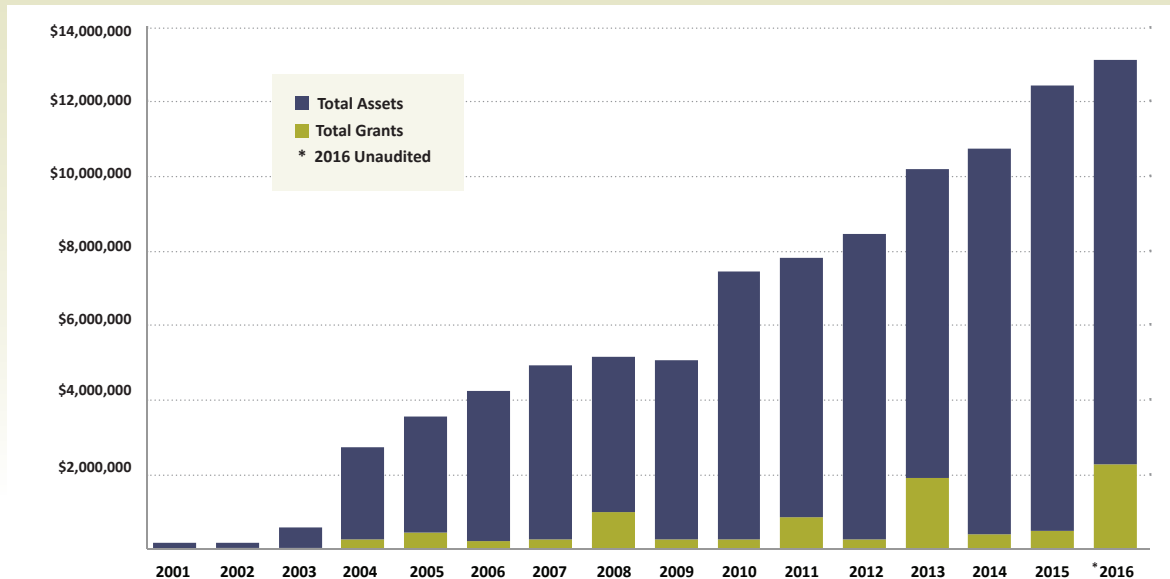


“Bainbridge Community Foundation does a remarkable job of encouraging and strengthening the nonprofits on the island. Having a donor advised fund is a wonderfully easy way for us to continue to be meaningfully involved – and as Island residents for over 50 years, that's very important to us.

– Tom and Karen Beierle

Photos Courtesy: (top left) Owen's Playground, (top right) Arts & Humanities Bainbridge, (bottom) Tom & Karen Beierle

Assets Under Management Compared to Total Grantmaking, 2001-2016



Statement of Financial Position

Modified Cash Basis – Data Reflects 2015 Audited Financial Statements

ASSETS		LIABILITIES & NET ASSETS	
Cash and Cash Equivalents	\$298,286	Funds Held for Others	\$307,767
Certificates of Deposit	1,989,995	Payroll Liabilities & Other	17,784
Investments	9,268,972	Net Assets	
Cost Method Investment	237,456	Unrestricted	1,103,005
		Temporarily Restricted	9,636,516
		Permanently Restricted	719,637
		Total Net Assets	11,459,158
TOTAL ASSETS	\$11,794,709	TOTAL LIABILITIES ASSETS	\$11,794,709

Statement of Activities for the Year Ended December 31, 2015

SUPPORT & REVENUE		EXPENSES	
Contributions	\$298,286	Program & Grants	\$534,439
Investment Income (Loss)	1,989,995	Management & General	152,019
		Fundraising	99,008
TOTAL SUPPORT & REVENUE	\$11,794,709	TOTAL EXPENSES	\$785,466

At-A-Glance

Change in Net Assets	\$1,114,137
Net Assets, Beginning of Year.....	\$10,345,012
Net Assets, End of Year.....	\$11,459,158

Audited Financial Statements The Bainbridge Community Foundation uses the audit services of Peterson Sullivan LLP. For questions or to receive a copy of the complete audited financial statements, please contact our offices.



bainbridgecf.org

*Our renewed mission is to inspire giving and service to enhance and sustain
our Bainbridge Island community.*

Beyond just a mission, we see this work as a movement.



BAINBRIDGE
Community Foundation

PHYSICAL ADDRESS: 149 Finch Place SW, Suite 4
MAILING ADDRESS: 221 Winslow Way West #305
Bainbridge Island, WA 98110
Telephone: 206.842.0433
www.bainbridgecommunityfoundation.org

