



BAINBRIDGE
Community Foundation

Inspiring Philanthropy

Bainbridge Community Foundation is a great partner to nonprofits in shaping and supporting the work we do. The Foundation demonstrates its commitment to this community and the nonprofits who serve it on a daily basis and we are honored to work with them.

—Susie Burdick,
Executive Director,
Kids Discovery Museum



REPORT TO THE COMMUNITY



welcome

We're delighted to present this report on the Bainbridge Community Foundation and our mission to encourage and provide meaningful ways for people to improve and sustain our community through philanthropy.

We achieve our mission by:

- Understanding community needs;
- Making grants to meet those needs;
- Engaging in community leadership activities that encourage philanthropy and address current and long-term needs on Bainbridge Island;
- Building the asset base to do this work today and into the future.

Dear Friends,

The ongoing efforts of the people who live on Bainbridge Island to take care of this community is nothing short of amazing. It is done every day in all sorts of ways from volunteering at the food bank to building an art museum; therefore it is a joy for us to share this report on the work at BCF that plays a role in making our community such a good place to live.

Our key accomplishments in 2013 include:

- Adding new Scholarship Funds, Donor Advised and Designated Funds to the Foundation that will continue to support Islanders for years to come
- Convening our nonprofit organizations by sector (environment and animal welfare; education; health, housing and human services; and arts, culture and recreation) to help us better understand the needs of the community
- Piloting a new Capacity Building Grant Program in response to the needs of our nonprofit organizations
- Partnering with a record number of fund holders during our Community Grant Cycle to support local nonprofits
- Working with *One Call for All* to develop ways that we can both support islanders in their philanthropy
- Celebrating the inspiring people who live in our community and the inspiring work they do

As you read through the stories and information in this report, we hope you too will appreciate both the accomplishments of the past year and opportunities to participate in the work of the Foundation in 2014.

Lynn Agnew, President
BCF Board of Trustees

Jim Hopper
Executive Director

inspiring people

In 2013, Bainbridge Community Foundation recognized three individuals and one family business for their remarkable contributions to philanthropy in our community. Their stories serve as a model for others about leading our community.

2013 Outstanding Bainbridge Philanthropists

Since 2009, BCF has recognized individuals or organizations that, through their acts of generosity, enhance the quality of life in our community.



"Time, talent and treasures come in many stages and sizes, and are each part of the commitment of a volunteer. In that, we are all philanthropists and we learn and encourage each other."

-Kate Webster,
Longtime Community Supporter



"I feel very connected to Bainbridge Island, not because it is so special, because there are wonderful people in other communities, but Bainbridge Island has a huge history of taking care of neighbors in our community."

-Larry Nakata,
Former CEO Town & Country Markets



"Jump into something you are passionate about. There is so much more you can get from giving back to the community—if it's work you really care about."

- Sarah Berschinski,
Bainbridge High School Graduate Class of 2013



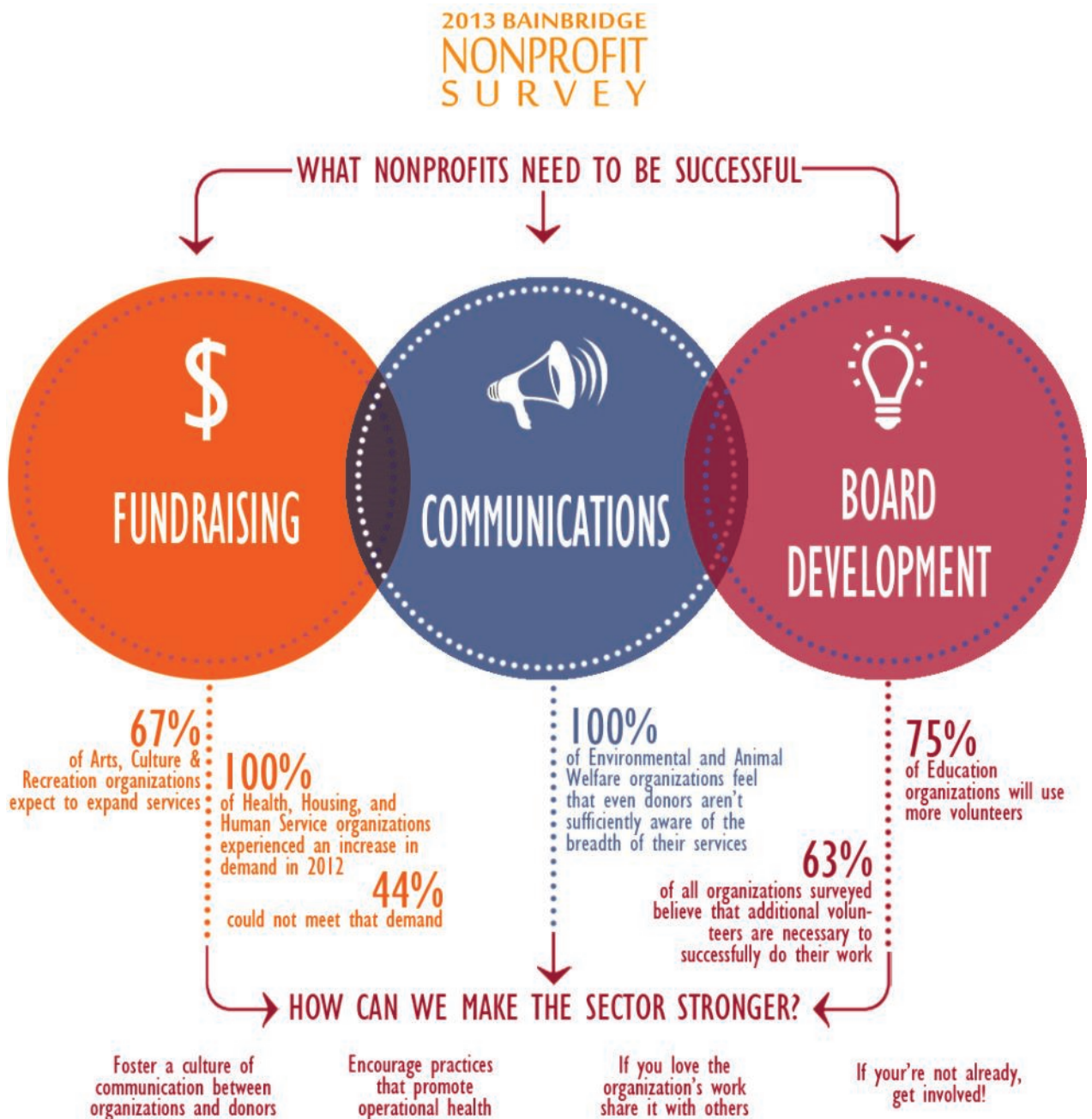
"We don't have a formal giving strategy, but when we see the need, we jump in. We believe that a business can't be successful unless it's involved in the community."

-Hill Family
Hill Worldwide Moving Services

building community

Early in the calendar year, BCF gathers together leaders of local nonprofits for our annual Sector Gatherings. The gatherings are a critical learning tool for the Foundation, educating us about issues and opportunities facing the organizations that do good work. Some of the key findings from the 2013 survey include:

- Though after-effects of the economic downturn still exist, organizations are feeling more optimistic about the health of the economy
- Demand for services continues to rise in all sectors, causing a need to increase donations and volunteer labor
- In order to sustain operations, organizations need to improve internal systems for fundraising, communications and board development and training



inspiring giving



"I started my Donor Advised Fund with inherited funds and named it after my mom, Maggi Rogers, in order to keep her name and her spirit alive and associated with all that is good in this world. Every time I see her name connected to a wonderful Arts, Education or Human Services project it makes my heart swell with joy and my eyes swell with tears. My mom and I plan to be part of the BCF family for a long time to come."

—Tracy Dickerson,
BCF Advised Fund Holder



"Through BCF we have enjoyed learning about our many local nonprofits and the positive roles they play in our lives. We also have seen wonderful examples of generosity on the part of individual citizens, actions which encourage giving by others."

—Judy and Bob Karr
BCF Advised Fund Holders

The 2013 year marked the Foundation's largest year of grantmaking, brought more Donor Advised Fund partners and community volunteers to the Community Grant Cycle, initiated a pilot grant program focused on nonprofit capacity-building, and brought the total grants awarded by the Foundation to more than \$5.3 million.

Community Grants Cycle

During the 2013 Community Grants Cycle, BCF granted a total of \$139,166. BCF intentionally makes grants to all sectors of the community, recognizing the importance of balancing the needs of various constituencies. The graphic below represents the distribution of grants for the 2013 Grants Cycle by sector area.

Trustee Award

Annually, BCF trustees, staff, and Community Grants Cycle committee members select collaborative projects for the Trustee Award. This award funds proposals that promote partnership or collaboration between community organizations.

This year's recipients include:

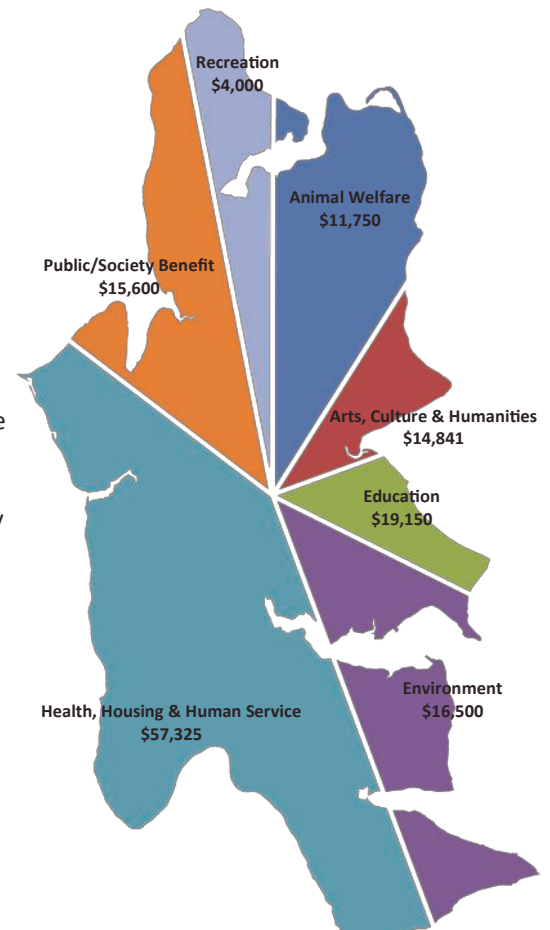
- Bainbridge Schools Foundation for a collaborative project with Bainbridge Island Museum of Art and Kids Discovery Museum
- Bainbridge Island Childcare Centers for collaborative staff training with the Boys and Girls Club of Bainbridge Island
- Bainbridge Youth Services for expanding community forums including the Bainbridge Youth Summit, a partnership of Raising Resilience, Bainbridge School District and Bainbridge Island Rotary

Capacity Building Grants

In response to the substantial need for capacity building that came out of the annual Nonprofit Survey, BCF launched a pilot Capacity Building Grants Program in the fall of 2013. The goal of the program was to provide direct assistance for capacity building expenses. Eleven local organizations applied and four were chosen to receive grants of between \$1,000 and \$1,500. Our evaluation of these grants in 2014 will determine priorities for future grant rounds.

Advised Fund Grants

A record \$1,827,089 in grants were made through Donor Advised Fund requests in 2013, 98% of which went to Island organizations.



asset development

Our work simply isn't possible without the support of generous members of the community. Their support enables us to respond to the needs of our community today, and to grow a permanent resource to meet the needs of tomorrow.

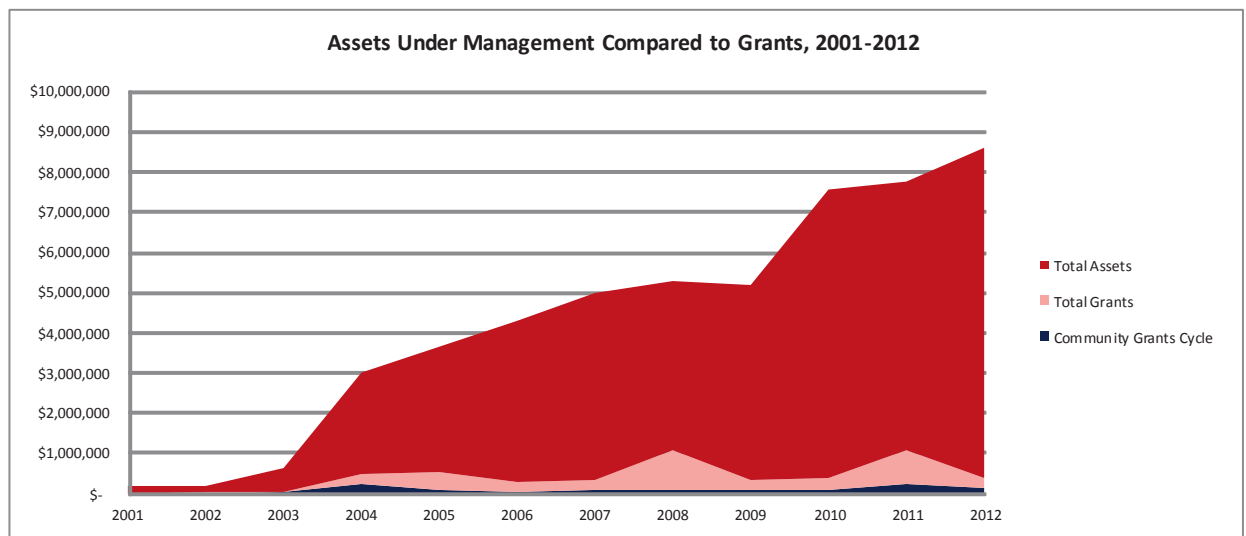
Fund Growth

In 2011, Bainbridge Community Foundation assumed the management of all of the Foundation's invested funds. The Foundation's investment strategy is balanced for growth and includes a mix of cash, fixed income, equities, real assets and complementary strategies. In partnership with Wells Fargo Advisors, the net portfolio return for 2013 was 13.10%

New Funds in 2013

Four new funds were opened at the Bainbridge Community Foundation in 2013:

- Laugh Cry Dream Read Fund
- BARN Fund
- Bainbridge High School Class of 1962 Scholarship Fund
- Waypoint Maintenance Fund



"When Cameron and I revised our wills several years ago, we wanted to include something for the community in addition to the usual bequests for family members. The Bainbridge Community Foundation provided the perfect solution to our need to choose among the many worthwhile nonprofits on the Island. We established a testamentary donor designated fund at BCF, where our bequests will be prudently invested and carefully dispersed over time to the causes most important to us." - Chris Snow, BCF Trustee and Planned Gift Donor

Statement of Financial Position

MODIFIED CASH POSITION

As of December 31, 2012 • From Audited Financial Statements

ASSETS		LIABILITIES AND NET ASSETS	
Cash and cash equivalents	\$627,353	Funds held for others	\$322,867
Investments	\$7,327,161	Net Assets	
Cost method investment	\$237,456	Unrestricted	\$1,187,544
Other assets	\$2,998	Temporarily restricted	\$6,263,850
		Permanently restricted	\$420,707
		Total net assets	\$7,872,101
Total assets	\$8,194,968	Total liabilities and net assets	\$8,194,968

Statement of Activities for Year Ended December 31, 2012

SUPPORT AND REVENUE		EXPENSES	
Contributions	\$702,762	Program and grants	\$270,168
Investment income (loss)	\$936,085	Management and general	\$77,597
		Fundraising	\$92,259
Total support and revenue	\$1,638,847	Total expenses	\$440,024

Change in net assets	\$1,198,823
Net assets, beginning of year	\$6,673,278
Net assets, end of year	\$7,872,101

Audited Financial Statements

The Bainbridge Community Foundation uses the audit services of Peterson Sullivan LLP. For questions or to receive a copy of the complete audited financial statements, please contact our offices.

Thank you

2013 Contributors

Abrams Fund at the Seattle Foundation	David & Cindy Harrison	Larry & Sandy Nakata
Bill & Lynn Agnew	Jay Hastings & Christine Susumi,	Wayne & Judy Nakata
Richard and Constance Albrecht	The Don & Jannette Hastings	Peter & Wendy O'Connor
Fund at the Seattle Foundation	Family Memorial Fund at the	Jeff Pritchard
Anonymous (4)	Seattle Foundation	Dana & Nancy Quitslund
Len Beil & Stella Ley	Hastings Family Fund at the	Jacob Leon Schloss
Paul & Debbi Brainerd	Alaska Community Foundation	Tom & Gretchen Seifert
Brown Family Private Foundation	Jim & Sarah Hopper	David Shorett
Paul & Betsy Carroll	Robert & Judy Karr	Chris & Cameron Snow
Stephen & Colleen Chupik	Larry & Omie Kerr	Frank & Mary Stowell
Tom & Suellen Cunningham	Peter & Mary Kerr	Paul & Elaine VonRosenstiel
Steve & Harriet Davis	Sheldon & Arleen Klasky	Drew Wolff
Wendy DelValle	Kondracke Family Foundation,	Marina Worsley
Fred H. & Mary S Dore	Honoring Morton &	Gifts to the Holt Webster Fund
Foundation	Margeurite Kondracke	Tasha Lea Essen
Troy & Hiltrud Dye	Tom & Debbie Kuffel	Lucky Seven Foundation
Janie & Chuck Ekberg	Ed & Karen Kushner	David & Deborah Rutherford
John & Ann Ellis	Steve & Patsy Larson	Carol White
Laura B Gowen	Brian & Anne Lawler	Gifts to the HotDog! Fund
Albert & Jola Greiner	Mary Lewis	George Goodrich
Sissy and Juneau Gift Fund	Mark & Lisa Lund	Mary Jane Goodrich
Susan Gundersen	Laura Lundgren	Gifts to the Maggi Rogers Fund
Richard & Bonnie Hagerman	Carl & Salli Middleton	Tracy Dickerson & Frank Petrie
	Larry & Barbara Mills	William & Madeline Schwarz

Information as of 1/5/2014. Please note that we make every effort to capture the above information correctly. We apologize for any errors or omissions. If you have encountered an error or omission, please contact the Foundation office. Thank you.



"For me, it's about helping to ensure that our vibrant community remains exactly that — vibrant. What better way than to be involved with BCF, an organization dedicated to providing meaningful ways for all of us to give back to this place we call home?"

- Wendy O'Connor,
BCF Board of Trustees

2013 Community Grants Cycle Grantees

Bainbridge Chorale	Battle Point Astronomical Association	Kitsap Adult Center for Education
Bainbridge Graduate Institute	Bloedel Reserve	Kitsap Children's Musical Theater
Bainbridge Island Arts & Humanities Council	Boys & Girls Clubs of King County	Kitsap Humane Society
Bainbridge Island Child Care Centers	C.A.S.T. Foundation	Kitsap Legal Services
Bainbridge Island Historical Museum	Dispute Resolution Center of Kitsap County	Kitsap Sexual Assault Center
Bainbridge Island Land Trust	Friends of Bainbridge Island High School	Martha & Mary
Bainbridge Island Museum of Art	Sailing	North Kitsap Fishline
Bainbridge Island Parks & Rec - Outdoor Programs	Helpline House	One Call for All
Bainbridge Island Rowing	Hope in Christ Ministries/The Coffee Oasis	PAWS of Bainbridge Island and North Kitsap
Bainbridge Island Special Needs Foundation	Hospice of Kitsap County	Peacock Family Center
Bainbridge Island Youth Orchestra	Housing Resources Board	Salish Sea Expeditions
Bainbridge Performing Arts	Interfaith Volunteer Caregivers	Sound Works Job Center
Bainbridge Public Library	Island Theatre	Washington State Smile Partners
Bainbridge Schools Foundation	Island Time Activities	West Sound Wildlife Shelter
Bainbridge Youth Services	IslandWood	West Sound Youth for Christ
	Kids Discovery Museum	YWCA of Kitsap County

2013 Scholarships

Bainbridge Music & Arts Legacy
Scholarship:
Sam Bishoff

George & Betty Munro
Scholarship:
Emily Carson

Wendy Jackson Hall Memorial
Scholarship:
Evan Pitkin &
Monica Hoblin

Staff

Jim Hopper, *Executive Director*
Debbie Kuffel,
Funds & Grants Administrator

Board of Trustees

Lynn Agnew	Jola Greiner	Carl Middleton III
Leonard Beil	Mary Kerr	Wendy O'Connor
Paul Carroll	Shel Klasky	Chris Snow
Colleen Chupik	Cynthia Hall	Elaine VonRosenstiel

Drew Wolff



Bainbridge Community Foundation
Physical Address: 149 Finch Place SW Suite 4
Mailing Address: 221 Winslow Way W #305
Bainbridge Island, WA 98110
206.842.0433
www.bainbridgecommunityfoundation.org



Bainbridge Community Foundation is accredited by the Community Foundations National Standards Board (CFNSB). We are confirmed in compliance with National Standards for U.S. Council on Foundations, a distinction that conveys a rigorous commitment to transparency, excellence, stewardship and leadership in philanthropy.