



## REPORT TO THE COMMUNITY

*Bainbridge Community Foundation*



**BAINBRIDGE**  
Community Foundation



## Board of Trustees

Marcia Hastings, *President*  
 Barbara Swartling, *Vice-President*  
 Jason Taylor, *Treasurer*  
 Wendy O'Connor, *Secretary*  
 Lynn Agnew  
 Cris Beattie  
 David Harrison  
 Theona Jundanian  
 Judy Karr  
 Mary Kerr  
 Omie Kerr  
 Shel Klasky\*\*  
 Vicky Marsing^  
 Paul Merriman  
 David Moen  
 Proctor Schenk  
 Chris Snow  
 Alex Torres\*

\*retired in 2017  
 ^joined in 2018  
 \*\*deceased 2018

## BCF Staff

Jim Hopper,  
*Executive Director*  
 Debbie Kuffel,  
*Program & Finance Officer*  
 Brigitte Yates,  
*Development Officer*  
 Jessica Henshaw,  
*Administrative Assistant*

## Address & Information

### PHYSICAL ADDRESS:

149 Finch Place SW, Suite 4

### MAILING ADDRESS:

221 Winslow Way West #305  
 Bainbridge Island, WA 98110

**Telephone: 206.842.0433**

BCF is accredited by the U.S. Council on Foundation's Community Foundations National Standards Board (CFNSB). We are confirmed in compliance with the National Standards for U.S. Community Foundations, a distinction that conveys a rigorous commitment to transparency, excellence, stewardship and leadership in philanthropy.

Illustrations by Tim Corey, Calibri Facilitation,  
[www.colibrifacilitation.com](http://www.colibrifacilitation.com)



“As an Island native, the health and strength of our Bainbridge community and residents is of great importance to me. Bainbridge Community Foundation continually strengthens our community by helping non-profits carry out our mission through their grantmaking, educational offerings, and community forums that bring sectors together to share best practices, new ideas and challenges. BCF support has given us the tools to grow and support our volunteer base, which is the very heart of our programs.

— Rita Elsberry, Executive Director, Island Volunteer Caregivers



# Welcome

On behalf of the board and staff of the Bainbridge Community Foundation, we want to thank you for your support and for taking the opportunity to learn more about BCF.

Bainbridge Community Foundation launched a new strategic plan in 2017 and is pleased to share our success in our second year. From our longstanding community grant cycle to our newly minted planned giving program, BCF is honored to serve Bainbridge and our citizens. This year, BCF delivered:



*The support of people like you has brought us this far, and we invite you to continue with us on this path toward a brighter future!*

- Increased outreach and programming on financial education to help improve the quality of life for islanders of all ages, with the goal to give people the background and education to improve themselves and their role in the community.
- A record grantmaking year that enhanced organizations doing work in the Bainbridge Community both on- and off-island through specific and targeted grant requests.
- An expanded team to enhance our ability to connect with more of you and to better serve our nonprofit community. This includes Jessica Henshaw, Administrative Assistant, who was raised on Bainbridge and recently returned with her husband Thomas to raise her young family. It also includes Brigitte Yates, who joined BCF as the Development Officer, after a long career in Advancement at the University of Washington.
- The launch of the Red Cedar Council, a group of donors recognized for including BCF in their estate plans to help ensure a healthy and sustainable future for Bainbridge.

In 2018, the Foundation will continue to expand its programming including more workshops to help build stronger nonprofits in our community. We will also expand the opportunities for others to support the grantmaking work of the Foundation, building a stronger community of donors who share our vision of a community where neighbors work together in a collaborative effort to support one another and ensure that our Bainbridge community is meeting the needs of all.

The support of people like you has brought us this far, and we invite you to continue with us on this path toward a brighter future!

Sincerely,

Marcia Hastings  
Board President

Jim Hopper  
Executive Director



# Inspiring People of 2017

**Bainbridge Community Foundation recognized three honorees at its ninth annual Inspiring People Philanthropy Celebration. Bob & Judy Karr, Bainbridge Self Storage, and Sophia Doane were recognized for their significant acts of philanthropy, leadership, and community-building.**

## Bob & Judy Karr

*2017 Outstanding Bainbridge Philanthropists*

**Bob and Judy Karr** are the epitome of Bainbridge Island stewards. In their years of service and philanthropic leadership they have helped the Island's largest and smallest organizations alike. Deeply connected to family and friends, Bob and Judy were motivated to build a network of people who, like them, would not be afraid to bring important ideas to fruition. Bob and Judy are symbolic of what makes Bainbridge Island a wonderful place – unassuming people who have a genuine compassion for the well-being of others around them.

## Bainbridge Self Storage

*2017 Outstanding Philanthropic Company*

**Bainbridge Self Storage**, manager Janice Danielson and her assistant manager, Isabelle Cobb, provide support for our community that is second to none. Janice and Isabelle work as a team to identify needs in our community and beyond – whether organizing pet food drives, raising money for veterinary care, or collecting supplies for victims of natural disasters. Bainbridge Self Storage, Janice and Isabelle are committed to making sure that no one in need in our community is turned away.

## Sophia Doane

*Outstanding Young Philanthropists*

An accomplished student of the violin, **Sophia Doane** took her passion for the instrument to the classroom as an instructor with the nonprofit, Kids in Concert. This experience fostered a love of teaching and a love for her students and inspired Sophia to launch an online fundraising campaign for the organization. In total, she raised more than \$5,000 to help more young people participate in this important program.

*Photos (left to right): 1) Bob & Judy Karr 2) Bainbridge Self Storage 3) Sophia Doane*





# Grants & Scholarships

***We are thrilled to report that 2017 was Bainbridge Community Foundation's largest grantmaking year ever both for dollar amounts and number of grants awarded. During 2017, 378 grants of all types were made totaling a record \$3,117,030, including 309 Donor Advised Fund grants of \$2,976,018 that ranged in size from \$250-\$1.6M. Cumulatively through December 2017, Bainbridge Community Foundation awarded 2,216 grants that totaled \$11,900,998 since BCF's inception in 2001.***

## Community Grant Cycle

Bainbridge Community Foundation awarded a record \$269,887 to local nonprofit organizations through its 2017 Community Grants Cycle (CGC). Sixty-two organizations received funding in sectors including arts and culture, animal welfare, education, environment, health and human services, and recreation. This is the most dollars and the largest number of grantees ever! Since the Community Grant Cycle was started in 2005, 546 grants totaling \$1,842,203 has been awarded through this program.

We also engaged a record number of volunteers through the CGC. We had a total of 48 participants on the CGC evaluation team. These Bainbridge Island neighbors and friends are better educated on the needs of our community thanks to their involvement.

## Collaboration Award

*Two organizations received the Collaboration Award in 2017*

Within the annual Community Grants Cycle, the Foundation promotes collaboration between nonprofits through the Collaboration Award. Our Collaboration Award is focused on funding applications that promote a true collaboration between organizations. This award is funded by donations from the board, staff, and Community Grants Cycle Evaluation Team members.

**Kids Discovery Museum** received funding to launch "KidiMu in the Community" a pilot community service program that provides volunteer and learning opportunities for young learners in the community. "KiDiMu in the Community" will partner with different agencies each quarter including Bloedel Reserve, Sustainable Bainbridge, and Bainbridge Senior Living.

**Kitsap Immigrant Assistance Center (KIAC)** received funding for their Family Services Center, which helps vulnerable immigrants become productive community members through direct services such as medical and dental clinics, legal services, citizenship classes, and help with English, paperwork, taxes and school. To do this work, KIAC partners locally with the YWCA, Olympic College, Kitsap Legal Services and Kitsap Community Resources as well as regionally with the Northwest Immigrant Rights Project, Medical Teams International, and numerous other agencies.



“BCF so beautifully parallels our mission at BPA. We seek to build and inspire community by bringing people together in one place, you do the same thing in spirit. The result is a more compassionate, more connected, and more wonderful community indeed. We're so very fortunate to benefit from the marvelous programs that BCF offers all year round.

– Dominique Cantwell, Executive Director, BPA

*Photo Courtesy: Dominique Cantwell*

## 2017 Grant Recipients

Alzheimer's Association  
 American Indian College Fund  
 American Lung Association  
 American Rivers  
 AmeriCares  
 Amherst College/Office of Financial Aid  
 Amnesty International  
**Arts & Humanities Bainbridge \***  
**Bainbridge Artisan Resource Network •**  
**Bainbridge Arts & Crafts •**  
 Bainbridge Chorale  
 Bainbridge High School  
**Bainbridge Island Child Care Centers\***  
**Bainbridge Island Downtown Association •**  
**Bainbridge Island Historical Museum •**  
 Bainbridge Island Japanese American Memorial  
**Bainbridge Island Land Trust •**  
**Bainbridge Island Metropolitan Parks & Recreation District •**  
**Bainbridge Island Museum of Art •**  
**Bainbridge Island Parks Foundation •**  
**Bainbridge Island Rowing \*\***  
**Bainbridge Island Senior Community Center\***  
**Bainbridge Island Special Needs Foundation •**  
**Bainbridge Performing Arts •**  
 Bainbridge Public Library  
**Bainbridge Roller Hockey League •**  
**Bainbridge Schools Foundation •**  
**Bainbridge Youth Services •**  
**Battle Point Astronomical Association •**  
 Beechwood School – California Family  
 Bennington College  
**BI Village (now Island Neighbors) •**  
**Bloedel Reserve •**  
**Boys & Girls Club of King County/BI •**  
 Burke Museum  
 Burlington Rotary Foundation  
 Carter Center  
 Chief Seattle Club  
 Childhaven  
 Clarke School for the Deaf  
 Classical King FM 98.1  
**Coffee Oasis •**  
 Conservation NW  
 Consumer's Union  
 Cornish College of the Arts  
 Doctors Without Borders

**EBC – West Sound •**  
**EcoAdapt •**  
 Elizabeth Home  
 Emory University  
**Empact Northwest •**  
 Florida State University  
**Forterra •**  
**Friends of Fort Ward •**  
**Friends of the Farms •**  
 Grace Episcopal Church of B.I.  
 Habitat for Humanity  
**Harmony Hill Retreat Center •**  
 Heifer International  
 Helpline House  
**Holly Ridge Center •**  
**Horse Harbor Foundation, Inc. •**  
**Housing Resources Bainbridge •**  
 Houston Humane Society  
 Hyla Middle School  
 Island School  
**Island Theatre •**  
**Island Time Activities •**  
**Island Volunteer Caregivers •**  
**IslandWood •**  
 Karam Foundation  
 KCTS  
**Kids Discovery Museum •**  
**Kids in Concert •**  
**Kitsap Humane Society •**  
**Kitsap Immigrant Assistance Center •**  
**Kitsap Legal Services •**  
**Kitsap Sexual Assault Center •**  
 KNKX  
 Kossoye Project  
 KUOW-Puget Sound Public Radio  
 Lake Tahoe Fund  
**Leadership Kitsap Foundation •**  
**Lord's Neighborhood Diner •**  
 Madrona School  
**Martha & Mary •**  
 Medical Teams International  
 Mercy Corps  
**Montessori Country School •**  
 Mount Olive Preschool  
 National Park Foundation  
 National Resources Defense Council  
 New School: Parsons School of Design  
**North Kitsap Fishline •**  
 Northwest Harvest  
 NOW

**Olympic Performance Group •**  
**One Call for All •**  
 Operation Nightwatch  
**OurGEMS •**  
 Ovation! Musical Theatre Bainbridge  
**Parkview Services •**  
 PATH  
**PAWS of Bainbridge Island/North Kitsap •**  
**Peacock Family Center •**  
 Planned Parenthood Federation of America, Inc.  
 Planned Parenthood of the Great NW  
 Puget Sound Restoration Fund  
**Raising Resilience •**  
 Rotary of Bainbridge Island Trust  
**Salish Sea Expeditions •**  
 Salvation Army of Houston  
 Save the Children  
**Scarlet Road \*\***  
 Seattle Aquarium Society  
 Seattle Central Community College  
 Seattle Men's/Women's Chorus  
 Seattle Opera  
 Seattle Repertory Theater  
 SightConnection  
 Snow Leopard Trust  
**Sound Works Job Center •**  
 Southern Poverty Law  
**Space Craft Presents •**  
 Stanford Fund  
 Stanford University School of Law  
 Thacker School  
 United Way of Greater Houston  
 United Way of Kitsap County  
 University of Michigan  
 Volunteers in Asia  
**Washington State Smile Partners •**  
 Washington Wildlife & Recreation Coalition  
 Waterfront Community Center  
**West Sound Academy •**  
**West Sound Wildlife Shelter •**  
**Yama Project c/o Olympic College Foundation •**  
 Yes! Magazine  
 Young Life  
**YWCA of Kitsap County •**  
 • *Community Grant Cycle*  
 \* *Capacity Building Grant*

## CGC Evaluation Team

Lynn Agnew, Cris Beattie, Tom Beierle, Jane Brand, Jean Casey, Ann Cook, Isolde Dagg, Marilyn Dearsley, Tracy Dickerson, Maria Drury, Sarah Yeonghong Go, Doug Hastings, Marcia Hastings, Jim Hopper, *BCF Staff*, Wyman Johnson Theona Jundanian, Judy Karr, Mary Kerr, Shel Klasky, Debbie Kuffel, *BCF Staff*, Dee Kurtz, Carolyn Leigh, Tom Leigh, Laura Liming, Susan Lusk, Barbara Magusin, Eva Manolis, Sonya Marinoni, Michael Milligan, Sue Mitchell, Bobbie Morgan, Kymberly Myrick, Wendy O'Connor, Sally Osborne, Althea Paulson, Paul Pearson, Maureen Ray, Proctor Schenk, Sandy Schubach, Ed Shonsey, Molly Shonsey, Lars Sikes, PhD, Ellin Spenser, Willard Steckel, Christina Wakefield, Brigitte Yates, *BCF Staff*



## Capacity Building Grants

In 2017, Bainbridge Community Foundation (BCF) awarded \$6,350 in capacity building grants to five area nonprofits, helping each organization strengthen and improve internal operations. Awards ranged from \$840 to \$1,500.

BCF's Capacity Building Grants support organizations that are actively striving to improve the efficiency and efficacy of their work by investing in core operations. Grants focus on supporting an organization's internal capacity, and fund projects that must be completed within six months.

Capacity building is distinct from direct program services, general operating support or capital expenses, in that it is intended to increase the knowledge, skill level, or efficiency of a nonprofit organization, its board members, and staff.

During five years of grantmaking through our Capacity Building Grants program, BCF has awarded nearly \$31,000 to 18 different organizations.

- Arts & Humanities Bainbridge
- Bainbridge Island Child Care Centers
- Bainbridge Island Rowing
- Bainbridge Island Senior Community Center
- Scarlet Road

## 2017 Scholarships

Bainbridge Community Foundation has awarded over \$168,500 in scholarships to date. In 2017, BCF awarded nine scholarships, totaling \$25,000. Six of these scholarships were awarded to Bainbridge High School students.

### Bainbridge High School Class of 1961 Scholarships:

**Michael Noland**, *University of North Dakota*  
**Carson McCarrel**, *Boise State University*

### Bainbridge High School Class of 1962 Scholarships:

**Eric Jung**, *Amherst College*  
**Brian Hutchison**, *Seattle Central Community College*

### Bainbridge Music & Arts Legacy Scholarship:

**Lucy Barcott**, *Bennington College*

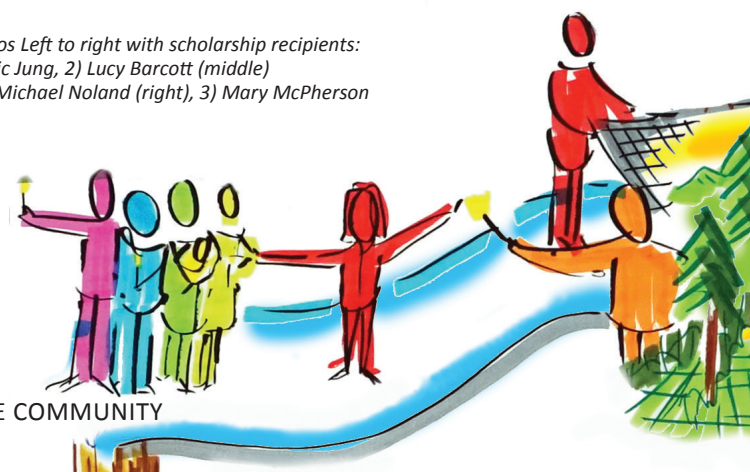
### George and Betty Munro Scholarship:

**Mary McPherson**, *Florida State University*

### Wendy Jackson Hall Scholarships

**Eilie Soderquist**, *Cornish College of the Arts*  
**Lily Aksan**, *The New School: Parsons School of Design*  
**Naira Diptee**, *Florida State University*

*Photos Left to right with scholarship recipients:  
 1) Eric Jung, 2) Lucy Barcott (middle)  
 and Michael Noland (right), 3) Mary McPherson*

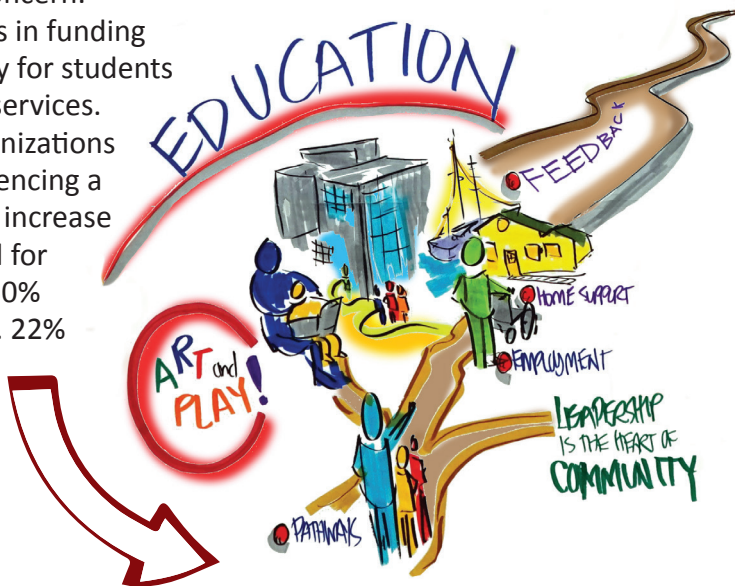


# Understanding Our Island

*Our community continues to benefit from a robust nonprofit sector. These organizations represent a diverse array of services, all of which directly benefit the quality of life on Bainbridge Island. Below are some of the highlights from that survey.*

## ► EDUCATION PROGRAMMING REMAINS STRONG, DESPITE A SOARING ANXIETY REGARDING THE FUTURE OF PUBLIC FUNDING.

- Instability in funding is of great concern.
- Limitations in funding limit ability for students to access services.
- More organizations are experiencing a significant increase in demand for services (50% in 2016 vs. 22% in 2015).

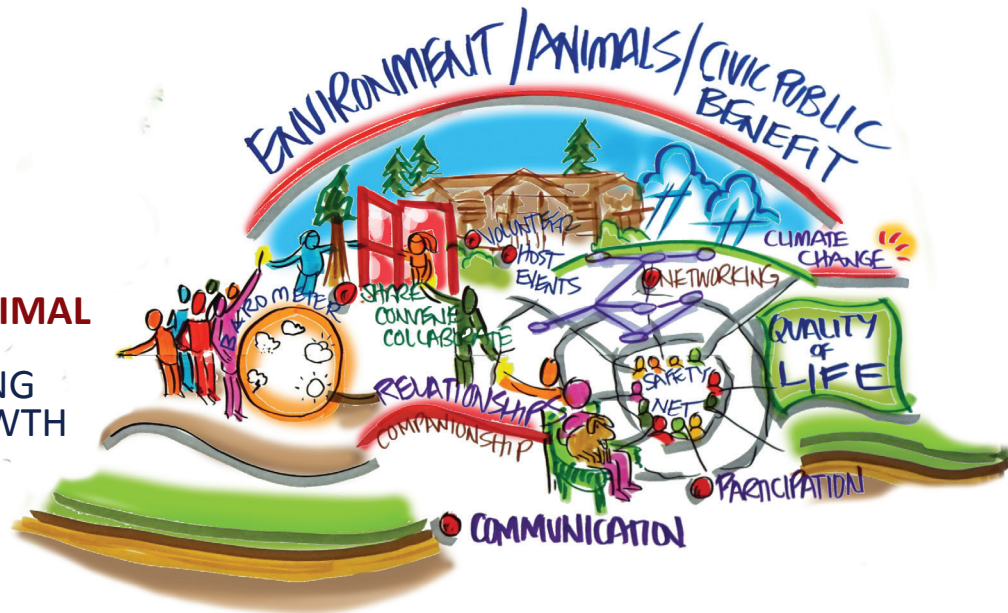


## ► THE ARTS, CULTURE & RECREATION SECTOR EMERGED FROM A CHALLENGING YEAR HAVING ACCOMPLISHED A GREAT DEAL OF PROGRAM ADVANCEMENTS AND OPERATIONAL EFFICIENCIES.

- National politics weigh heavy on the minds of leaders.
- Organizations challenged to ensure access to low income patrons and to reach beyond the Island for patronage.
- More organizations are experiencing a decrease in patronage. In 2016, 23% saw a decrease. In 2015, none experienced a decrease.



► **ENVIRONMENT AND ANIMAL WELFARE** ORGANIZATIONS ARE SUCCESSFULLY MEETING DEMAND, BUT THEIR GROWTH BRINGS NEW COSTS.



- National politics weigh heavy on the minds of leaders.
- Organizations challenged to adequately serve low-income populations.
- Demand for services is significantly high. For a second year in a row, nearly ¾ of respondents experienced a significant demand. None experienced a decrease in demand.



► **THE HEALTH, HOUSING, & HUMAN SERVICES** SECTOR IS IN THE MIDST OF SIGNIFICANT ADVANCEMENTS, WHILE LOOKING FORWARD APPREHENSIVELY

- National politics weigh heavy on the minds of leaders.
- Transportation to services and their organizations ability to meet demand are the biggest barriers to serving others.
- Demand for services increases, 93% saw an increase over last year (88% saw demand increase in 2016).



## BCF Partners & Contributors

*Our ability to endorse and support relevant nonprofit work in our communities is closely tied to thoughtful philanthropy of our donors, friends and community partners. We are deeply grateful for the generosity of those who share our passion for supporting and enriching the lives of all who are part of the broader Bainbridge community and beyond.*



### Spotlight: Ron Munro

Ron Munro, the second son of George and Betty Munro of Crystal Springs was born August 3, 1935 and passed away on July 10, 2017.

Ron attended Island schools, was active in Boy Scout Troop 496, learned to hunt and fish with his dad and other members of the Sportsman's Club, picked strawberries and dug clams for spending money and spent lots of time

on the beach. He graduated with the Bainbridge High School Class of 1953 and helped start the tradition of painting the roads of high school seniors. Ron received a degree in Art from Olympic College and a Forest Management degree from the University of Washington in 1961. He loved the woods and worked as a tree trimmer, logger and forester to earn money for college.

He met and married his beloved wife of 57 years, Miriam, in 1959. Together they raised two sons, Jim and Bob. Ron's career in Forest Management and Consulting Forestry spanned over 50 years and reached around the globe. Working with the Washington Farm Forestry Association and the Weyerhaeuser Company, Ron helped many families establish their own tree farms. It is estimated that he planted nearly one million trees in his lifetime. Later in life, Ron spent much time doing his artwork.



Recently he presented artwork to Bainbridge High School as well as a compilation of his work to the Bainbridge Island Museum of Art.

*Photos Courtesy: Top Left: Sustainable Bainbridge; Middle: Helpline House; Top Right: Kitsap Humane Society. The picture of Ron Munro is courtesy of Karla Shaw.*

## Funds at Bainbridge Community Foundation

Alder Fund  
Averill Park Fund  
Bainbridge Music & Arts Legacy Scholarship  
Bainbridge Youth Sports Access Fund  
BARN Fund  
BCF Community Fund  
BCF Community Response Fund  
BCF Endowment Fund  
BCF Housing Action Fund  
BHS Class of '61 Scholarship Fund  
BHS Class of '62 Scholarship Fund  
BIAHC Amy Award for Emerging Artists  
BIAHC Island Treasure  
BSF Elizabeth Orr Fund  
Chris & Cameron Snow Fund  
Chris & Cameron Snow Designated Fund  
Croker Family Fund  
Cunningham Family Fund  
DuBois Family Fund  
The Emile Fund  
The Fund for Bainbridge Public Schools

George & Betty Munro Scholarship Fund  
Gloria Collins Brownell Fund  
Harald Hurlen Fund  
Hastings Family Fund  
H. Clay & Sherry Roberts Fund  
Heyday Fund  
Hilderman Family Fund  
Hillside Fund  
Holt Webster Fund  
Hot Dog! Fund for Bainbridge Performing Arts  
Island Cultural Enrichment Fund  
Jicana Fund  
The Jupiter Fund  
Bob & Judy Karr Family Fund  
KHW Fund  
Klasky Family Fund  
Laugh Cry Dream Read Fund  
Leslie & Michael Lebeau Philanthropic Fund  
Maggie Rogers Fund  
The Mathurin Fund  
Michael Milligan & Jeanne E Fund  
Oifan & Barry Peters Designated Fund

Paulson-Mallove Family Fund  
Peters Fund for a Sustainable Community  
Plan B Fund  
Pleasant Beach Family Fund  
Saber Fund  
Sada Ross Fund  
Sebastian Galpert Memorial Fund  
Sophia Fund  
Stephen & Harriet Davis Fund  
Swartling Family Fund  
Thomas & Karen Beierle Fund  
The Vincent F. Petrie Memorial Scholarship Fund  
Waypoint Capital Fund  
Webster Family Fund  
Wendy Jackson Hall Scholarship Fund

### Endowed Community Funds

Estate of Charles F. Hawk  
Webster Community Fund

*Endowed Community Funds are gifts to the Foundation's permanent endowment.*



“By opening a Donor Advised Fund at Bainbridge Community Foundation, we have the opportunity as a family to support organizations that make a difference in our community. In addition, our DAF is endowed – meaning that we can engage philanthropically to meet current needs and also leave a legacy that will continue serving Bainbridge Island for years to come.

– Barbara and David Swartling

*Photos Courtesy: (top left) KHS, (top right) BI Land Trust, (bottom) Barbara and David Swartling*

## 2017 Contributors to Bainbridge Community Foundation

Richard & Sharon Abrams ●  
 Richard & Sharon Abrams Fund at The  
 Seattle Foundation  
 Todd & Yaroslava Adams ●  
 Lynn & Bill Agnew ●●  
 Amazon Smile Foundation  
 An Anonymous Fund at The Seattle  
 Foundation  
 Barbara Anderson ●  
 Anne Vining Dennon Trust  
 Anonymous (3) ●  
 Charles Averill  
 Bainbridge Island ACE Hardware ●  
 Robert W. Baird & Co. Inc.  
 Cris & Rob Beattie ●  
 Thomas & Karen Beierle Fund at BCF  
 Tom & Karen Beierle ●  
 Carol Bell ●  
 Bart Berg ●  
 Bradley & Elizabeth Berry  
 Jane & Stan Brand ●  
 Gloria Collins Brownell Fund at BCF  
 Karen Burke  
 Susan Callan ●  
 Patsy Campbell  
 Casey Family Programs  
 Charles Schwab & Co.  
 Radolph & Paula Chuka  
 Steve & Colleen Chupik ●  
 Sylvian & Bruce Colley  
 Drew & Emily Crandall  
 Rob Crichton  
 Croker Family Fund at BCF  
 Gary & Shirley Cummings  
 Tom & Suellen Cunningham ●  
 Cunningham Family Fund at BCF  
 David & Carol Myers Foundation  
 Steve & Harriet\* Davis ●●  
 Stephen & Harriet Davis Fund at BCF  
 Wendy del Valle  
 Shane & Katie Dir ●  
 Tena Doan  
 Robert & Anne Doane ●  
 Nancy Dobbs  
 Fred H. & Mary S. Dore Foundation  
 Beulah Downing & Dennis Carlson  
 Peter & Maria Drury ●  
 Everett & Bernie DuBois ●  
 Troy Dye  
 Tomi Egashira  
 Chuck & Janie Ekberg  
 Scott Farwell  
 Allan & Barbara Ferrin  
 Fidelity Charitable Gift Fund  
 Finelite  
 James & Beth Fiorda  
 Ellen Fountain  
 Jim & Carol Furman  
 Marsha Kifer Gladhart  
 George "Jay" & Brigid Goodrich

Mary Jane Goodrich  
 Laura B. Gowen ●  
 Susan Guffey  
 Susan & Jerry Gundersen  
 Carl Haefling  
 Richard & Bonnie Hagerman  
 Reid & Barbara Hansen  
 David & Cindy Harrison ●●  
 Marcia & Doug Hastings ●  
 Hillside Fund at BCF  
 Jim & Sarah Hopper ●  
 Robert & Becky Huff  
 Virginia Hughes  
 Jicana Fund at BCF  
 Wyman & Karoline Ann Johnson ●  
 Theona Jundanian & Tim Dore ●  
 Bob & Judy Karr ●  
 Bob & Judy Karr Family Fund at BCF  
 Daphne Diana & Brett Armstrong  
 Kelley  
 Mary & Peter Kerr ●  
 Omie & Larry Kerr ●  
 Eugene & Judith Kiriluk  
 Klasky Family Fund  
 Shel\* & Arleen Klasky ●  
 Ted & Katy Klinkenberg  
 Peter Tiersma & Jeanne Koruga  
 Barbara Kowalski  
 Debbie & Tom Kuffel  
 DeLona Kurtz  
 Ed & Karen Kushner  
 Jenny & John Lange  
 Steve & Patsy Larson  
 Judi & Lee Leader  
 Leslie and Michael Lebeau  
 Philanthropic Fund at BCF  
 Tom & Carolyn Leigh ●  
 Jim Lombard  
 Tim Leyh & Joan Lukasik  
 Mark & Lisa Lund  
 Roy & Laura Lundgren ●  
 Carla & Doug Mackey  
 Barbara & Frank Magusin ●  
 Rex & Rosemary Marsh  
 Vicky & David Marsing ●  
 Paul & Suzanne Merriman ●  
 Carl & Salli Middleton ●  
 Michael Milligan & Jeanne E Fund  
 at BCF  
 David & Fran Moen ●  
 Jerry Monahan  
 David Munro  
 Miriam Munro  
 Ralph Munro  
 David & Carol Myers ●  
 Ellen Nakata ●  
 Larry & Sandy Nakata ●  
 Robert & Sally Nakata  
 Blaine & Joanne Newnham  
 Bob & Janice O'Brien

Wendy & Peter O'Connor ●  
 Jay Oleson & Jill Cody  
 One Call for All  
 Chris & Shawn Otorowski  
 Paulson-Mallove Family Fund at BCF  
 Plan B Fund at BCF  
 Gesina Pedersen  
 Barry & Channie Peters ●  
 Tracy Dickerson & Frank Petrie ●●  
 Josephine Petrie  
 Shirley & Douglas Post  
 Andrew & Loveta Price ●  
 Dana & Nancy Quitslund  
 Chris & Jeanie Reike  
 Julie Riely-Gibbons  
 Henry & Donna Robinett  
 Claude & Janet Robinson  
 Ty Cramer & Steve Romein ●  
 Sada Ross ●  
 Sada Ross Fund at BCF  
 Saber Fund at BCF  
 Proctor & Deborah Schenk ●●  
 Jacob Schloss  
 Peter Hudson Davis & Kristiann  
 Schoening  
 William & Madeleine Schwarz  
 Michael Scott  
 Mark & Susan Shaffer  
 Dave & Alice Shorett ●  
 Chris & Cameron Snow ●●  
 Sophia Fund at BCF  
 Ellin Spenser ●  
 Willard Steckel  
 Shari Steele  
 Thomas & Susan Styrlund  
 Andrea & Mike Suraci  
 Jack & Carole Sutherland  
 Barbara & David Swartling ●●  
 T. Rowe Price  
 Jason & Sara Taylor  
 Piper & Jon Thornburgh ●  
 Alex & Leslie Torres ●  
 Mildred & Shig Tsutsumi  
 USAA  
 Eric Cederwall & Jo VanderStoep  
 Joyce & David Veterane ●  
 Veterane Family Foundation  
 Elaine & Paul VonRosenstiel  
 Connie & Bill Waddington  
 Gail Wade  
 Liz & Fred Walters ●  
 Susan Waters  
 Kelly Webster ●  
 Webster Family Fund at BCF  
 Lael Wedekind  
 Robert Weschler  
 Trese & Frank Williamson  
 Drew Wolff & Noelle Cooper  
 Ann Wyckoff  
 Brigitte & Jeremy Yates

# 2017 Contributors to Bainbridge Community Foundation

Laurie Yelle  
YHB Charitable Endowment  
Carl & Mary Zaremba  
Ed Zimney & Sandy Schubach ● ●

- Leadership Circle Members
- Red Cedar Council Members
- \* Deceased

## GIFTS TO THE COMMUNITY RESPONSE FUND

Tim Leyh & Joan Lukasik

## GIFTS TO HOUSING ACTION FUND

Richard & Sharon Abrams Fund at The Seattle Foundation  
Ed & Karen Kushner

## GIFTS TO THE BCF ENDOWMENT FUND

David & Carol Myers Foundation  
Drew Wolff & Noelle Cooper

## GIFTS IN HONOR OF KATE WEBSTER

Mary & Peter Kerr

## GIFTS IN HONOR OF HARRIET DAVIS

Mary & Peter Kerr

## GIFTS IN HONOR OF MAGGI ROGERS

William & Madeleine Schwarz

## GIFTS IN HONOR OF ROBERT E. WADE

Gail Wade

## GIFTS IN MEMORY OF PATSY TABAFUNDA FLORES

Gary & Shirley Cummings

## GIFTS TO THE MUNRO FAMILY SCHOLARSHIP IN MEMORY OF RON MUNRO

Anne Vining Dennon  
Bradley & Elizabeth Berry  
Nancy Dobbs  
James & Beth Fiorda  
Richard\* & Bonnie Hagerman  
Reid & Barbara Hansen  
Robert & Becky Huff  
Virginia Hughes  
Daphne Diana & Brett Armstrong Kelley  
Eugene & M. Judith Kiriluk  
Peter Tiersma & Jeanne Koruga  
Rex & Rosemary Marsh  
Jerry Monahan  
David Munro  
Miriam Munro  
Ralph Munro  
Robert & Sally Nakata  
Shirley & Douglas Post  
Chris & Jeanie Rieke  
Henry & Donna Robinett  
Peter Hudson Davis & Kristiann Schoening

Thomas & Susan Styrlund  
Mildred & Shig Tsutsumi  
Susan Waters  
Carl & Mary Zaremba

## GIFTS TO THE HOT DOG! FUND

George "Jay" & Brigid Goodrich  
Mary Jane Goodrich

## GIFTS TO THE YOUTH ACCESS FUND

Anonymous  
Charles Averill  
Karen Burke  
Sylvian Colley  
Rob Crichton  
Tena Doan  
Tomi Egashira  
Scott Farwell  
Marcia & Doug Hastings  
Jenny & John Lange  
Judi & Lee Leader  
Gesina Pedersen  
Julie Riely-Gibbons  
Mark & Susan Shaffer  
Andrea & Mike Suraci  
Connie Waddington  
Robert Weschler

## GIFTS TO THE VINCENT F. PETRIE MEMORIAL SCHOLARSHIP

Frank Petrie  
Josephine Petrie

## GIFTS TO THE CLASS OF 1961 SCHOLARSHIP

Gary & Shirley Cummings  
Troy Dye  
Ellen Fountain  
Richard\* & Bonnie Hagerman  
James Lombard  
One Call for All  
Claude & Janet Robinson  
Mildred & Shig Tsutsumi  
Gail Wade  
Lael Wedekind  
Laurie & David Yelle

## GIFTS TO THE CLASS OF 1962 SCHOLARSHIP

Anonymous (2)  
Paula & Radolph Chuka  
Donna Davidson  
One Call for All

## CGC Funding Partners

Lynn & Bill Agnew  
Alder Fund  
Anonymous (3)  
Anonymous Fund at The Seattle Foundation  
Averill Park Fund  
BCF Collaboration Award Fund  
Cris & Rob Beattie

Casey Family Programs  
Drew & Emily Crandall  
Croker Family Fund  
Cunningham Family Fund  
DuBois Family Fund  
Gloria Collins Brownell Fund  
Fred H. & Mary S. Dore Foundation  
H. Clay & Sherry Roberts Fund  
Carl Haefling  
David & Cindy Harrison  
Marcia & Doug Hastings  
Hastings Family Fund  
Heyday Fund  
Hillside Fund  
Jim & Sarah Hopper  
Jicana Fund  
Wini Jones  
Theona Jundanian & Tim Dore  
Bob & Judy Karr  
Bob & Judy Karr Fund  
Mary & Peter Kerr  
Omie & Larry Kerr  
Marsha Kifer Gladhart  
Shel\* & Arleen Klasky  
Klasky Family Fund  
Barbara Kowalski  
Debbie & Tom Kuffel  
DeLona Kurtz  
Althea Paulson  
Michael & Leslie Lebeau Philanthropic Fund  
Maggi Rogers Funds  
Paul & Suzanne Merriman  
Michael Milligan & Jeanne E Fund  
David & Fran Moen  
Wendy O'Connor  
Paulson-Mallove Family Fund  
Peters Fund for a Sustainable Community  
Philanthropic Fund  
Plan B Fund  
Quail Roost Foundation  
Saber Fund  
Proctor & Deborah Schenk  
Michael Scott  
Sophia Fund  
Chris & Cameron Snow  
Willard Steckel  
Shari Steele  
Stephen & Harriet Davis Fund  
Barbara & David Swartling  
Jason & Sara Taylor  
Alex & Leslie Torres  
Elaine & Paul VonRosenstiel  
Brigitte & Jeremy Yates

*Please note that we make every effort to capture the above information correctly. We sincerely apologize for any errors or omissions. If you have encountered an error or omission, please contact the Foundation office. Thank you.*



# Asset Development

*BCF started 2017 with a corpus of \$10,481,000. Assets grew in 2017 by \$5.3 million. After a record grantmaking year in which more than \$3.1 million was distributed to important community causes, BCF ended 2017 with a corpus of \$12.34 million.*

## Fund Growth

Wise investing is critical to the long term success of the Foundation and to helping fulfill our mission and the vision of our donors. We work to ensure our investments generate income, while mitigating potential risks.

For the long term, we want to ensure that the assets grow in a manner that will maintain positive returns net of fees, distributions, and when applicable, grants. Our finance committee regularly reviews investment performance and approves the strategy in partnership with our investment manager.

## Legacy Giving

**REDCEDAR  
COUNCIL**  
.....



The Red Cedar Council is a special group of thoughtful and visionary donors who partner with BCF to help ensure a healthy and sustainable future for the Bainbridge community. Their permanent funds, bequests, life income gifts, lead trusts, and other planned gifts provide a valuable pipeline of future support for generations.

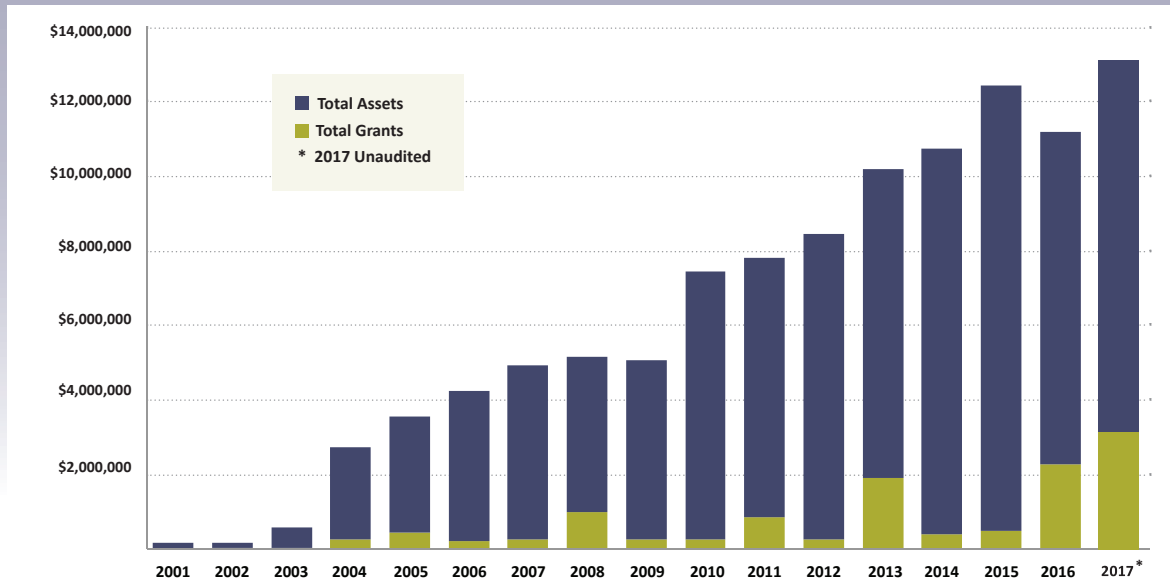
In its inaugural year, 13 families joined the Red Cedar Council by creating a permanent fund or by including a gift to BCF in their will.

In recognition of your partnership and generosity when you join the Red Cedar Council, you will enjoy the following benefits:

- A relationship with the foundation and other donors during your lifetime.
- Satisfaction in knowing your legacy will make a difference in your community for years to come.
- Recognition in newsletters and annual reports, unless anonymity is desired.
- Invitation to the annual Red Cedar luncheon in February, the Philanthropy Celebration in September and other special donor events.

**Including a gift to Bainbridge Community Fund (BCF) in your will or trust is a permanent statement of your values and enables you to create a meaningful legacy without impacting your current financial security.** A charitable bequest is also your way of helping ensure that the causes your care about or volunteer for during your life will be supported and sustained even when you are gone. Your gift to BCF also entitles your estate to a charitable estate tax deduction.

## Assets Under Management Compared to Total Grantmaking, 2001-2017



## Statement of Financial Position

Accrual Basis – Data Reflects 2016 Audited Financial Statements

ASSETS		LIABILITIES & NET ASSETS	
Cash and Cash Equivalents	\$1,681,352	Funds Held for Others	\$307,583
Certificates of Deposit	240,000	Grants Payable	26,500
Investments	8,665,822	Payroll Liabilities & Other	10,162
Cost Method Investment	237,456	Net Assets	
Other Assets	615	Unrestricted	1,413,437
		Temporarily Restricted	8,160,804
		Permanently Restricted	906,759
		Total Net Assets	10,481,000
<b>TOTAL ASSETS</b>	<b>\$10,825,245</b>	<b>TOTAL LIABILITIES ASSETS</b>	<b>\$10,825,245</b>

## Statement of Activities for the Year Ended December 31, 2016

SUPPORT & REVENUE		EXPENSES	
Contributions	\$727,057	Program & Grants	\$2,331,217
Investment Income (Loss)	847,616	Management & General	139,873
Other Income	14,103	Fundraising	95,844
<b>TOTAL SUPPORT &amp; REVENUE</b>	<b>\$1,588,776</b>	<b>TOTAL EXPENSES</b>	<b>\$2,566,934</b>

### At-A-Glance

Change in Net Assets .....	(\$978,158)
Net Assets, Beginning of Year.....	\$11,459,158
Net Assets, End of Year.....	\$10,481,000

**Audited Financial Statements** The Bainbridge Community Foundation uses the audit services of Peterson Sullivan LLP. For questions or to receive a copy of the complete audited financial statements, please contact our offices.



[bainbridgecf.org](http://bainbridgecf.org)

*Our renewed mission is to inspire giving and service to enhance and sustain  
our Bainbridge Island community.*

Beyond just a mission, we see this work as a movement.



**PHYSICAL ADDRESS:** 149 Finch Place SW, Suite 4  
**MAILING ADDRESS:** 221 Winslow Way West #305  
Bainbridge Island, WA 98110  
**Telephone:** 206.842.0433  
[www.bainbridgecf.org](http://www.bainbridgecf.org)

