

# BAINBRIDGE NONPROFIT SURVEY 2018



# INTRODUCTION



**Our community benefits from a robust nonprofit sector. These organizations represent a diverse array of services, all of which directly benefit the quality of life on Bainbridge Island.**

The mission of the Bainbridge Community Foundation is to inspire giving and service to enhance and sustain our Bainbridge Island community.

In order to achieve our mission, we focus on four key strategies:



As part of our continuing efforts to stay current on issues and trends in our local nonprofit community, BCF annually convenes and surveys local nonprofit leaders to better understand the challenges and opportunities facing individual organizations, the broader context in which they operate, and to help us and our partners anticipate and meet evolving needs.

Bainbridge Community Foundation is tremendously grateful to the nonprofit leaders who participated in the survey and convenings. It is with great honor for their work that we present highlights and key lessons from the 2018 Bainbridge Nonprofit Survey.

Please note that the opinions shared in this survey are representative of more than one voice in the survey and/or sector gatherings. The views expressed in each sector do not necessarily reflect the opinions of all the participating organizations, but do represent common themes in each sector.

# OVERALL FINDINGS



## HIGHLIGHTS

- All sectors are showing positive trends.
- Partnerships with other nonprofits are rising.
- Attracting and retaining staff is a common challenge, especially given high cost of living.
- Integrating social justice (diversity, equity, and inclusion) is a common goal across sectors.
- Tax law changes, and the impact on charitable giving is a chief concern.
- The sometimes radical shifts in federal policy impacts programming from basic human services to climate change to wildlife conservation to land use to cultural funding.

# OVERALL FINDINGS

## Service Areas

BAINBRIDGE ISLAND

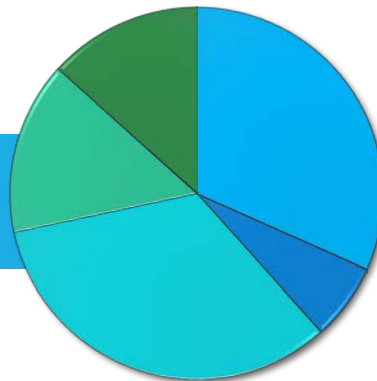
KITSAP COUNTY

REGIONAL

WASHINGTON STATE

NATIONAL

## Sector Distribution



- Arts, Culture & Recreation
- Civic/Public Benefit
- Health, Housing, & Human Svc
- Education
- Environment/Animal Welfare

## Sector Health\*

Arts, Culture & Recreation

TRENDING POSITIVE

Health, Housing, Human Service

TRENDING POSITIVE

Education

TRENDING POSITIVE

Environment / Animal Welfare

TRENDING POSITIVE

\*Measured by: Ability to Meet Demand, Program Growth, Program Expansion, Fundraising Success, & Professional Development

# OVERALL FINDINGS

## Trends

- Collaboration is a growing positive trend, with 85% of all respondents planning expansions in collaboration in 2018.
- Expanding the quality and depth of programming is also a key priority, with 85% of respondents planning growth in this area as well.
- There are few planned reductions planned for 2018, and those few organizations that are planning reductions plan to do so in staff size and the number of programs offered.
- Capacity building is paying off. Steady investments in capacity (54%-71% of respondents indicated investing in capacity building between 2015-2018), more than 90% report that these investments have been successful.

## Capacity Needs

BOARD DEVELOPMENT/GOVERNANCE

FUNDRAISING

COMMUNICATIONS/MARKETING

INFORMATION TECHNOLOGY (IT)

SUCCESSION PLANNING

LEADERSHIP RECRUITMENT AND DEVELOPMENT

STRATEGIC PLANNING

PERFORMANCE MEASUREMENT SUPPORT

PROGRAM EVALUATION

HUMAN RESOURCES

FINANCIAL MANAGEMENT AND BUDGETING

MERGER FEASIBILITY ANALYSIS



# ARTS, CULTURE & RECREATION

The Arts, Culture & Recreation sector experienced a much better 2017 after facing significant challenges in 2016.

## Highlights

- Participant / Audience demand was up in 2017, with 89% of organizations experiencing a slight to significant increase in demand for services, but youth and student access to programs is still a challenge.

- Twenty percent of respondents could not meet demand in 2017, a smaller number than 2016, when 40% could not meet demand. The most common reason for not meeting demand involved physical space constraints.

- Eighty-four percent of respondents met or exceeded fundraising expectations in 2017, a 16% increase from the prior year. Despite this, 58% identified fundraising as a significant challenge in their organization.

## Key Challenges

FUNDRAISING

STAFF SIZE

NUMBER OF VOLUNTEERS

QUALITY / DEPTH OF PROGRAMS

NUMBER OF PEOPLE SERVED

NUMBER OF PEOPLE SERVED

QUALITY / DEPTH OF PROGRAMS

COLLABORATION WITH OTHER NONPROFITS

## Expansion Goals



# HEALTH, HOUSING & HUMAN SERVICE



While funding is always a challenge, some great successes have emerged from the Health, Housing, & Human Services sector over the course of the last year.

## Highlights

- Program expansion was the most common theme among respondents' success stories from 2017.

- Eighty-five percent of respondents indicated a slight to significant increase in demand for services. That combined figure is slightly less than the year prior, however, in isolating those who experienced "significant demand" the number was up from the prior year.

- Seventy percent were able to meet demand. For those who could not meet demand, the most common reasons cited included limited staff and financial resources.

- As it was last year, transportation to services and their organizations ability to meet demand are the biggest barriers to serving more. This most severely impacts senior and low-income access to HHS programs.

## Key Challenges

FUNDRAISING

STAFF SIZE

NUMBER OF PEOPLE SERVED

QUALITY / DEPTH OF PROGRAMS

## Expansion Goals

COLLABORATION WITH OTHER NONPROFITS

NUMBER OF VOLUNTEERS

# HEALTH, HOUSING & HUMAN SERVICE

## 2016 COBI Needs Assessment

- Affordable and low-income housing are scarce
- As the population ages, senior services must increase to meet the increasing demand
- Residents are not aware of others' needs and also don't know what services are available.
- Proper mental health care is difficult for some to find, due to accessibility and affordability issues
- Teenagers' mental health and substance use counseling needs are not being met.

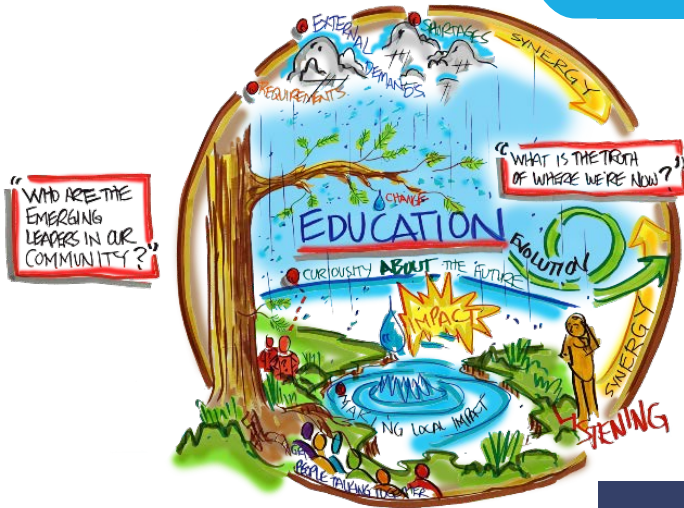
## 2017 Kitsap County Health Trends

- Trending Positive
- Trending Neutral
- Trending Negative

- Residents living below 100% of poverty. (10%)
- Youth (age 5-17) living below 100% of poverty (9%)
- Households spending more than 30% of monthly income on housing costs. (31%)
- Homeless Youth (age 5-17). (3%)
- Adults report that they and people in their community do favors for each other often or very often. (51%)
- Adults report mental distress (14 or more days of poor mental health during the past 30 days) (9%)
- Youth (grade 8) report seriously considering attempting suicide during the past 12 months (20%)
- Youth (grade 10) report using alcohol in the past 30 days. (17%)
- Youth (grade 10) report using marijuana in the past 30 days. (15%)



# EDUCATION



The Education Sector is continuing a positive upward trend after a demanding 2016.

## Highlights

- Key successes of 2017 focused around effective programming and operational improvements.
- Outside of the public school environment, financial affordability is the primary barrier to accessing educational programs.
- Fewer organizations report experiencing a significant demand for services (44% in 2017 vs 50% in 2016), but that number was still twice as high as was reported in 2015.
- For the first time in two years, most (75%) of organizations could meet demand.
- Most organizations met or exceeded fundraising expectations in 2017 (89%), a dramatic difference from 2016 when 43% did not meet fundraising expectations.

## Key Challenges

FUNDRAISING ACTIVITIES

QUALITY / DEPTH OF PROGRAMS

STAFF SIZE

## Expansion Goals

QUALITY / DEPTH OF PROGRAMS

COLLABORATION WITH OTHER NONPROFITS

FUNDRAISING ACTIVITIES

NUMBER OF PROGRAMS

# EDUCATION

## 2017 Kitsap County Health Trends

- Trending Positive
- Trending Neutral
- Trending Negative



High School Graduation Rate (87%)

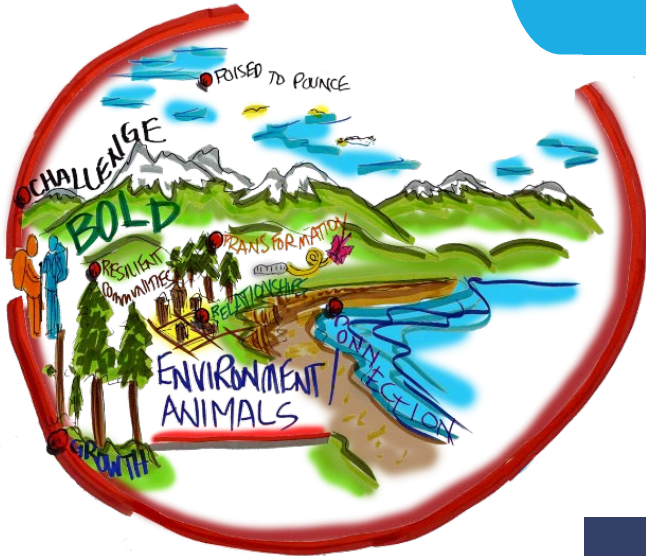


Children ages 3-4 enrolled in early education programs. (60%)

## 2016 Healthy Youth Survey Data

AREA	Grade 8	Grade 10	Grade 12
LIFETIME ALCOHOL USE	18%	39%	56%
CURRENT BINGE DRINKING	3%	6%	19%
LIFETIME MARIJUANA USE	5%	18%	38%
CURRENT ILLEGAL DRUG USE	1%	1%	8%
SUBSTANCE ABUSE AT SCHOOL	5%	5%	14%
BULLYING	15%	16%	12%
WEAPON CARRYING AT SCHOOL	3%	3%	6%
OPPORTUNITIES FOR SCHOOL INVOLVEMENT	92%	97%	95%
SOCIAL / EMOTIONAL SKILLS	78%	76%	89%
60 MINUTES OF PHYSICAL ACTIVITY PER DAY	30%	18%	19%
LIFETIME SEXUAL ACTIVITY	4%	15%	41%
LIFETIME SEXUAL ABUSE VICTIM	10%	8%	12%
DEPRESSION	24%	25%	25%
CONTEMPLATION OF SUICIDE	18%	19%	17%
SOMEONE TO TALK TO	83%	86%	85%

# ENVIRONMENT / ANIMAL WELFARE



**Environment and Animal Welfare organizations have been building capacity for several years and are ready for action.**

## Highlights

- Organizations touted success in the efficacy of their programs as key success indicators in 2017.
- Human resources (qualified staff and engaged board members) were cited as essential needs to ensure success in 2018.
- For the third year in a row, demand for services is significantly high. All of the respondents reported an increase in demand from the prior year.
- While fewer organizations could meet demand from 2016, at 75%, their ability to meet demand was much higher than 2015, when 89% could NOT meet demand.
- All organizations reported the ability to meet or exceed fundraising expectations in 2017.

## Key Challenges

COLLABORATION WITH NONPROFITS

FUNDRAISING ACTIVITIES

NUMBER OF PEOPLE SERVED

## Expansion Goals

FUNDRAISING ACTIVITIES

NUMBER OF VOLUNTEERS



---

Bainbridge Community Foundation

**Physical Address:** 149 Finch Place SW Suite 4

**Mailing Address:** 221 Winslow Way West #305  
Bainbridge Island, WA 98110

206.842.0433

[www.bainbridgecommunityfoundation.org](http://www.bainbridgecommunityfoundation.org)

*Together, we are Bainbridge.*